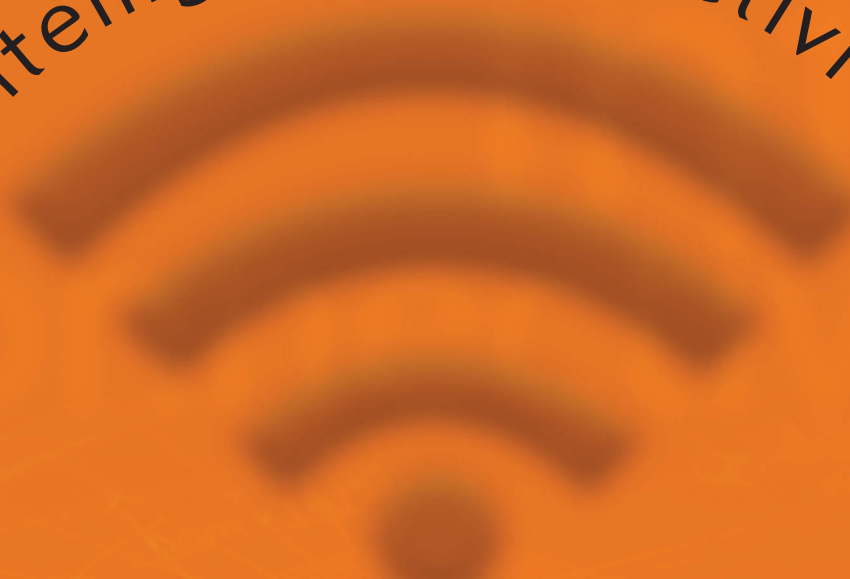


intelligent connectivity



**NWT**

PRODUCT CATALOGUE



NWT

# introduction

## Company

New World Telecom Inc. (NWT) was established in 1991 to design, manufacture and distribute telecommunications products. Today, we are one of the leading companies in Canada setting the standard for quality, innovation, performance and reliability in providing solutions for the data communications market. Through innovation and market research, NWT is determined to remain at the forefront of this growing field. With this expertise NWT is now innovating for key markets such as network-based voice solution.

## Vision - Quality and Value

New World Telecom (NWT) continues to respond to the evolving EIA /TIA and ISO/IEC standards. We continue to design the latest connectivity products that meet and exceed reliability and value goals demanded by all of our clients. With commitment to the ISO 9002 standards in our manufacturing process, consistent quality is delivered in all of our products and services. With our years of experience and extensive technical knowledge we are committed to improving existing products as well as designing new products. This allows NWT to meet the ever-growing need for speed and reliability in communications.

## Customer Service Excellence

New World Telecom (NWT) is distinguished from others for its knowledgeable customer service staff. We at NWT provide detailed technical training to all our customer service representatives. NWT staff

can assist you in buying any range of products from a few components to large custom installations. NWT staff will also help you with both pre-sales and post-sales questions, even the representative at the distribution counter can answer any of your questions. The same team will help you with any product trouble shooting or getting defective items replaced as soon as possible. Hence, a dedicated customer service agent typically handles all the transactions. This helps customers know that they will get results in the shortest period of time.

## Distribution

New World Telecom stocks a large volume of inventory at its headquarters in Toronto. For inventory on hand, NWT is able to provide same day shipping throughout North America. By partnering with major distributors worldwide, New World Telecom is also able to provide quick and efficient fulfillment of all orders originating out of Asia, Africa, Europe and South America (all shipments are dependent on the usual customs and shipping capabilities of their region).

## Standards Approved

All NWT products are manufactured to be compliant with ISO 9002 standards. This ensures that all of the products comply with EIA / TIA and ISO/ IEC's latest standards and are UL/ CUL or CSA approved. NWT always meets and often exceeds the industry standards to keep customers satisfied.

## Product Warranty

New World Telecom stands behind

every one of its products by offering a Lifetime Limited Warranty. New World Telecom will replace or repair defective parts directly or through its distribution partners, depending on how the products were sold. Contact New World Telecom or your local reseller to obtain complete warranty details.

## Branding

New World Telecom promotes all of its products under its own name with NWT branding. This commitment allows our client companies in identifying NWT as a leader in quality and technological innovation. NWT customers can carry these product lines with the knowledge that the NWT logo is not only known worldwide but carries the guaranty of satisfaction and reliability.

## Website:

<http://www.newworldtelecom.com>  
New World Telecom web site provides the latest product information and services to serve our customers.

## Website Features:

- Downloadable PDF Product Catalogue
- Latest News
- New Products
- Inquiries
- Technical Support
- Free Downloads

Thank you for your continuous support in making New World Telecom the successful company it is today.

NWT staff look forward to serving you now and in the future.

**NWT**

intelligent connectivity



# table of contents

## ■ Work Area Outlets

Quick Connect Jacks.....	4
Keystone Jacks.....	5
Multimedia Keystone Jacks.....	6
Flush Mount Keystone Plates.....	7
Oversize Flush Mount Keystone Plates .....	8
Oversize Flush Mount Designer Plates .....	8
Decora Style Flush Mount Keystone Plates.....	9
Stainless Steel Flush Mount Keystone Plates .....	9
Surface Mount Keystone Boxes .....	10
Telephone Jacks.....	11
Modular Plugs .....	12
Push & Seal Connectors (Compression).....	13
Couplers & Converters .....	13
xDSL Products .....	14
Mounting Brackets.....	15
Industrial Cabling System.....	16
CATV Baluns .....	17
CCTV Baluns .....	18
VGA Baluns .....	19
DB-Modular Adapter Kits.....	20

## ■ Cross Connect

BIX-Type Products.....	21
Multimedia Cross Connect System (BIX Mount) ...	23
Patch Panels .....	24
Blank Patch Panels.....	25

Network Homes .....	26
Network Homes .....	27

## ■ Cable Management

Wire & Cable.....	28
Patch Cords .....	29
Telephone Cords and Assemblies .....	30
HDMI Accessories .....	31
Fiber Optics.....	32
Cable Managers.....	33
Wall Brackets & Rack Shelves.....	34
Relay Racks.....	35
Cable Ties.....	36
Wiring Products.....	37
Wiring Ducts .....	38

## ■ Tools & Testers

Cable Testers .....	39
Tools .....	40
Tools .....	41
Tools .....	42

## ■ Equipment

Network Switches 10/100 Mbps.....	43
Network Switches Gigabit .....	44
WiFi & More .....	45
Telecom Accessories .....	46
Wiring Chart.....	47
Terms & Conditions .....	48

## QUICK CONNECT JACKS

Quick Connect System from NWT is a state-of-the-art Integrated IDC Design that requires no termination screws to mount the cable, saving 2/3 of installation time. 110 IDC connectors are already attached to the jack and no assembly is required. 50 Micron gold plated for superior performance.



NW-204QCW	4C Quick Connect Flush Mount Jack, White
NW-204FQCW	Combo 4C X F81 Quick Connect Plate, White
NW-2044QCW	Duplex 4C Quick Connect Flush Plate, White
NW-20C6V	Combo Cat.6 Data & Voice Flush Plate, Oversize, White
NW-20C6VF	Combo Cat.6 Data, Voice & F-81 TV Flush Plate, Oversize, White
NW-104QCW	4C Surface Jack Quick Connect, White
NW-D6B	6 Binding post decora center plate
NW-D2K-VGA	1 VGA & 2 Keystone decora center plate
NW-D2K2H	2 HDMI & 2 Port keystone decora center plate
NW-D2KH	1 HDMI & 2 Port keystone decora center plate
NW-DF3C	1 F-81 & 3 RCA Component to F-81 conversion, decora center plate

*When terminating cable on to the keystone jack, do not untwist pairs more than half an inch. Twisting in pairs reduces interference, the number of twists per foot in each pair is pre-measured from the factory to produce balanced cable. Therefore in order to ensure successful Category 6A compliance, cable must be handled and installed carefully to avoid unnecessary cross talk.*

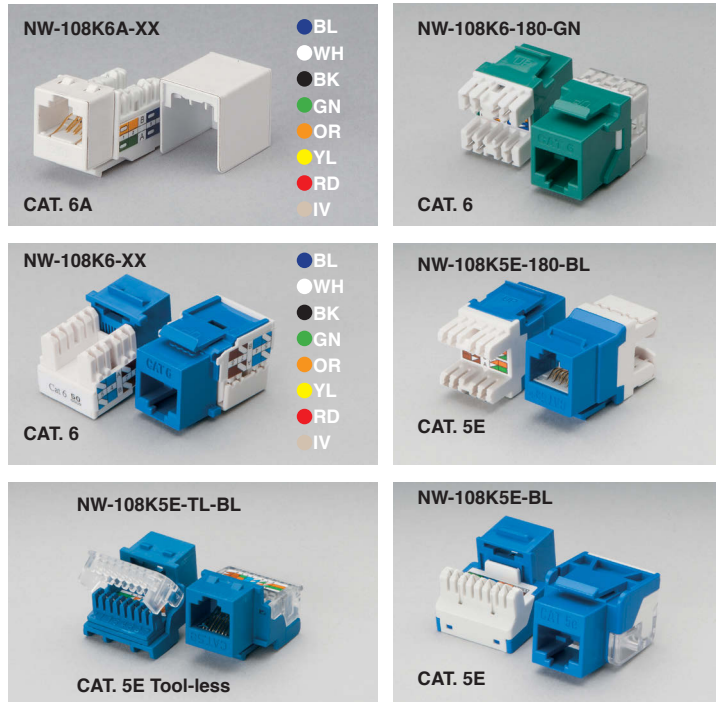


\* For cover plates go to page 9

## KEYSTONE JACKS

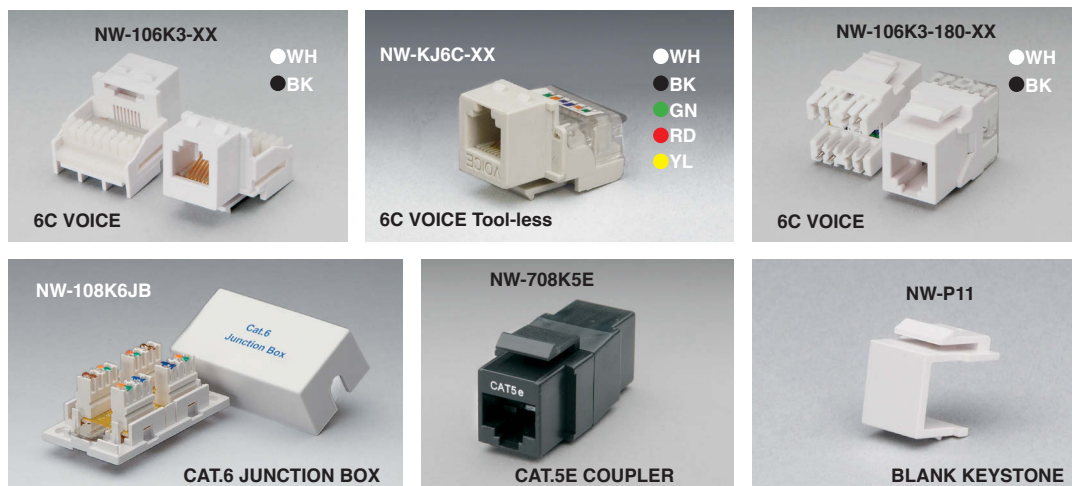
New World Telecom's new state-of-the-art Category 6A (Augmented) Keystone Jack is engineered for high speed 10 Gbps cabling system. Featuring enhanced NEXT, FEXT and Low Return Loss together with protection against Alien Crosstalk that exceeds Category 6A standards for 10 Gbps. The PCB design eliminates the split pairs to reduce installation time. Meets or exceeds EIA /TIA 568.2-10 standards and IEEE 802.3 an rev 1.0 application requirements.

NWT's wide range of high quality connectors provide multimedia configurations to the desktop as well as the telecommunications closet. All NWT Multimedia Keystone Jacks are constructed with high impact, UL 94V-0 rated housing, UL / CUL approved according to EIA / TIA Standards. ETL Verified.



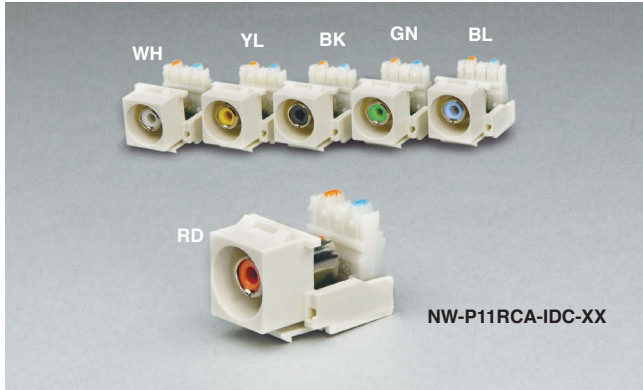
NW-108K6A-XX	Cat.6A (Augmented) Keystone Jack 110 IDC to 8C T568A/ T568B wiring
NW-108K6-180-GN	Cat.6 Keystone Jack 110 IDC to 8C, 180 Degree, Green
NW-108K6-XX	Cat.6 Keystone Jack 110 IDC to 8C, T568A/T568B wiring
NW-108K5E-180-BL	Cat.5E Keystone Jack 110 IDC to 8C, 180 Degree, Blue
NW-108K5E-TL-BL	Cat.5E Tool-less Keystone Jack. Blue T568A/T568B wiring
NW-108K5E-BL	Cat.5E Keystone Jack 110 IDC to 8C, Blue
NW-106K3-XX	Voice Keystone jack 6C, 110 IDC to 6C, USOC wiring
NW-KJ6C-XX	Voice Tool-less Keystone, Jack, 6C, USOC wiring
NW-106K3-180-XX	Voice Keystone Jack 6C, USOC wiring,, 180 Degree
NW-108K6JB	Junction Box, Cat. 6
NW-708K5E	Cat 5E coupler, Keystone style
NW-P11	Blank keystone module, White

XX = Colours



## MULTIMEDIA KEYSTONE JACKS

Multimedia modules from NWT features high performance and fast installation of audio, video, voice and data networking. With advancement in technology, UTP cable can now be used to transfer audio and video signals via S-Video, VGA, BNC, F-type and RCA Keystone modules.



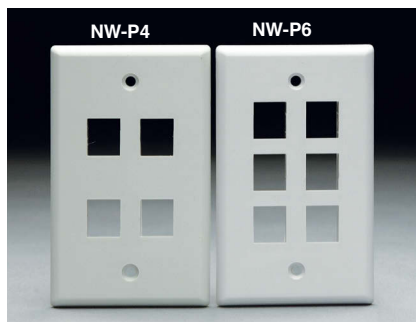
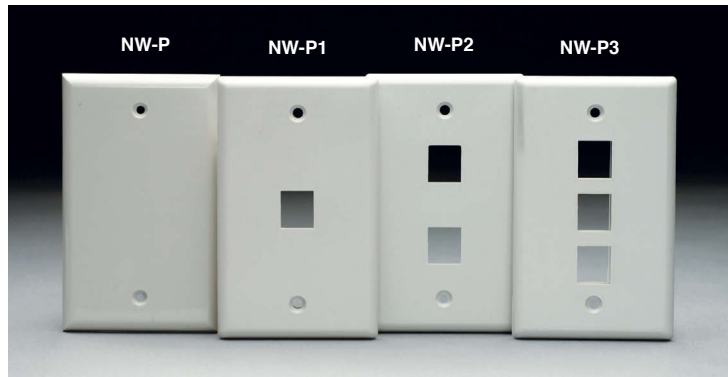
NW-P11RCA-IDC-XX	RCA Female to 110 IDC Keystone Module Signal transfer over UTP
NW-P11BNC	BNC Keystone Insert Female to Female
NW-P11RCA	RCA Keystone Module Female to Female
NW-P11F1	F-Type TV Module Keystone Insert
NW-P11FN	F-Type Keystone Module Low Profile
NW-P11SP	Audio Speaker Wire to IDC(UTP) Keystone Jack
NW-P11B-XX	3-Way binding post for audio speakers XX = RD, BK
NW-P11SV	S-Video Keystone Module Female to 110 IDC. Signal transfer over UTP
NW-P11LC	LC Keystone Module Female to Female
NW-P11SC	SC Keystone Module Female to Female
NW-P11ST	ST Keystone Module Female to Female
NW-P11HDMI	HDMI Female to Female Keystone Jack
NW-P11-3.5A	3.5 Audio Stereo to IDC(UTP) Keystone Jack
NW-P11USB-A-S	USB(A) to screw type UTP or Mini COAX
NW-P11USB-AA	USB A-A Keystone Coupler
NW-P11USB-AB	USB A-B Keystone Coupler
NW-P11USB-BB	USB B-B Keystone Coupler





## FLUSH MOUNT KEYSTONE PLATES

NWT's Flush Mount Keystone Plates are designed to compliment today's work area office decor and attractively houses NWT's Keystone Jacks. The flush plates can be attached to standard electrical boxes for flush mount installations. The single gang flush plates can also fit over NW-625MB mounting boxes for surface mount installation. The snap on screw cover on NWT Design Plates allow easy access and eliminates visible mounting screws. Available in 1, 2, 3, 4 and 6 port configurations for greater installation flexibility.



### SMOOTH TYPE

NW-P	Blank Flush Mount Keystone Plate, White
NW-P1	1 Port Flush Mount Keystone Plate, White
NW-P2	2 Port Flush Mount Keystone Plate, White
NW-P3	3 Port Flush Mount Keystone Plate, White
NW-P4	4 Port Flush Mount Keystone Plate, White
NW-P6	6 Port Flush Mount Keystone Plate, White



### NWT DESIGN

NW-PD	Blank NWT Design Flush Mount Keystone Plate	White
NW-PD1	1 Port NWT Design Flush Mount Keystone Plate	White
NW-PD2	2 Port NWT Design Flush Mount Keystone Plate	White
NW-PD3	3 Port NWT Design Flush Mount Keystone Plate	White
NW-PD4	4 Port NWT Design Flush Mount Keystone Plate	White
NW-PD6	6 Port NWT Design Flush Mount Keystone Plate	White
NW-2PD8	8 Port NWT Design Double Gang Flush Mount Keystone Plate	White
NW-2PD12	12 Port NWT Design Double Gang Flush Mount Keystone Plate	White

### FRONT LOADING PLATE

NW-CP	Cover Plate
NW-CP-B	Blank Module
NW-CP-1K	1 Port Keystone Module
NW-CP-2K	2 Port Keystone Module

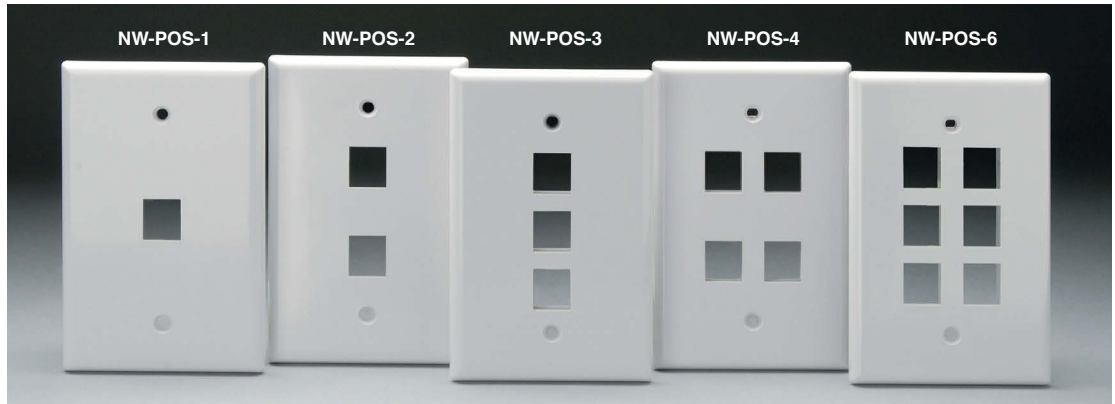
If there is no electrical box provided, always use proper mounting brackets NW-MPLS on dry wall for flush mount plates.



## OVERSIZE FLUSH MOUNT KEYSTONE PLATES

New World Telecom is now introducing Over Size Flush Mount Keystone Plates. The Over Size Plates provide expanded coverage area (3 1/8" X 4 7/8") (79.2mm X 123.6mm) to cover irregular drywall cuts or flaws. Compatible with all NWT Keystone Jacks.

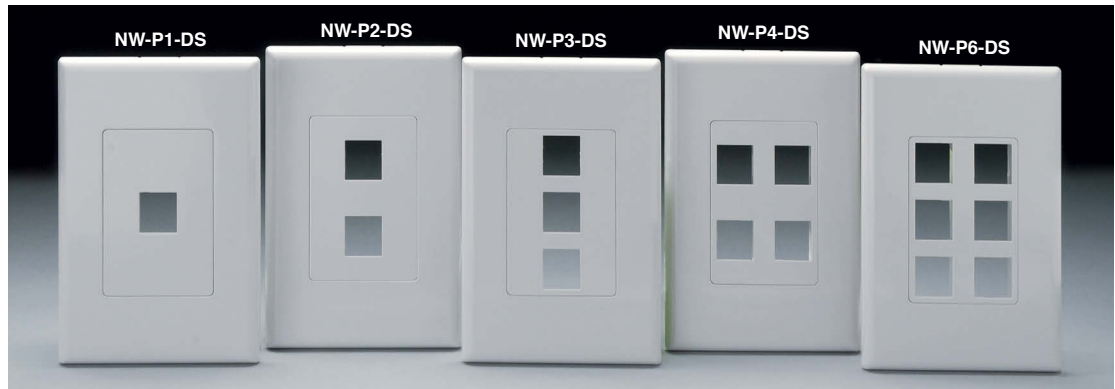
NW-POS-1	1 Port Over Size Flush Mount Keystone Plate, White
NW-POS-2	2 Port Over Size Flush Mount Keystone Plate, White
NW-POS-3	3 Port Over Size Flush Mount Keystone Plate, White
NW-POS-4	4 Port Over Size Flush Mount Keystone Plate, White
NW-POS-6	6 Port Over Size Flush Mount Keystone Plate, White



## OVERSIZE FLUSH MOUNT DESIGNER PLATES

Over Size Designer Flush Mount Keystone Plates have no visible screws. The Over Size Designer Plates provide expanded coverage area (3 1/8" X 4 7/8") (79.2mm X 123.6mm) to cover irregular drywall cuts or flaws. Compatible with all NWT Keystone Jacks.

NW-P1-DS	1 Port Over Size Flush Designer Keystone Plate, White
NW-P2-DS	2 Port Over Size Flush Designer Keystone Plate, White
NW-P3-DS	3 Port Over Size Flush Designer Keystone Plate, White
NW-P4-DS	4 Port Over Size Flush Designer Keystone Plate, White
NW-P6-DS	6 Port Over Size Flush Designer Keystone Plate, White



## ANGLED KEYSTONE PLATES

Angled Keystone plates from New World Telecom protects cable bend radius. The 45 degree angle prevents cables from being damaged by furniture while complimenting today's work area office décor.

Low profile angled plates can be field configured with keystone jacks or keystone type multimedia modules.

Designed for flush mounting and accepts any high density keystone jacks.

UL /cUL & CSA approved.

NW-P1A	1 Port Angled Keystone Plate, White
NW-P2A	2 Port Angled Keystone Plate, White
NW-P4A	4 Port Angled Keystone Plate, White



## DECORA STYLE FLUSH MOUNT KEYSTONE PLATES

Decora Style Strap accepts all NWT Multimedia Keystone Jack Modules. Straps fit decorator style electrical faceplates and allow for easy mounting of communication outlets in power poles and floor pedestals. Decora Straps are available in blank, 1, 2, 3, 4 and 6 port configurations for greater installation flexibility. Cover plates are available in single, double, triple and quadruple gang formats.

NW-D0	Blank Decora Strap
NW-D1	1 Port Decora Strap
NW-D2	2 Port Decora Strap
NW-D3	3 Port Decora Strap
NW-D4	4 Port Decora Strap
NW-D6	6 Port Decora Strap
NW-PDC	Single Gang Cover Plate
NW-2PDC	Double Gang Cover Plate
NW-3PDC	Triple Gang Cover Plate
NW-4PDC	Quadruple Gang Cover Plate



## STAINLESS STEEL FLUSH MOUNT KEYSTONE PLATES

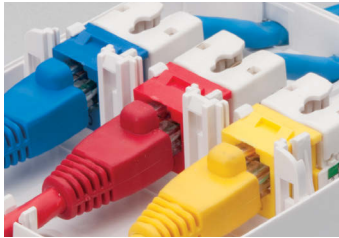
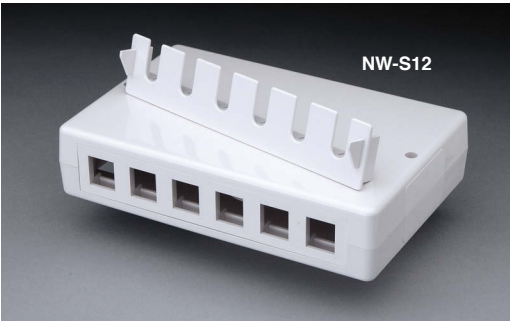
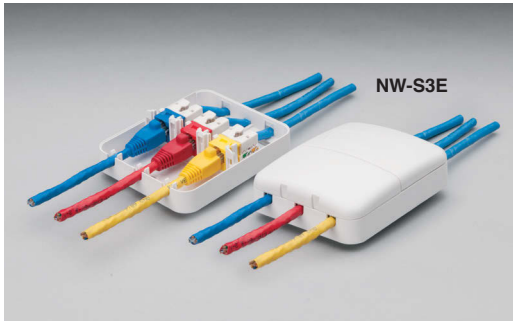
New Stainless Steel Plates from NWT offer a Flush Face Surface. Available in single gang 1, 2, 3, 4 and 6 port configurations, NWKS-SS1WP is specially designed to Wall Mount any Ethernet based VoIP Phone with Network Jack (8C).



NWKS-SS1WP	Wall Phone Stainless Steel Keystone Plate
NWKS-SS1	1 Port Stainless Steel Keystone Plate
NWKS-SS2A	2 Port Stainless Steel Keystone Plate
NWKS-SS2	2 Port Stainless Steel Keystone Plate
NWKS-SS3	3 Port Stainless Steel Keystone Plate
NWKS-SS4	4 Port Stainless Steel Keystone Plate
NWKS-SS6	6 Port Stainless Steel Keystone Plate

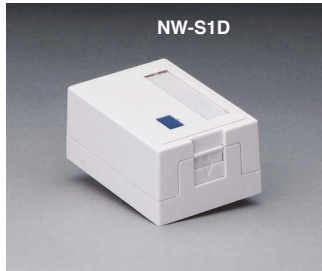
## SURFACE MOUNT KEYSTONE BOXES

New World Telecom offers a complete line of Surface Mount Boxes for NWT Multimedia Keystone Jacks. The boxes are low profile and easy to install on a flat surface using the included two-way tape or drywall screws. The surface mount boxes are ideal for installations with no recess area. Available in 1, 2, 3, 4, 6 & 12 port versions with or without spring loaded dust cover door.



- NW-S1
- NW-S2
- NW-S4
- NW-625MB-W
- NW-S12
- NW-S3E

- 1 Port Surface Mount Keystone Box with two way adhesive tape and screws
- 2 Port Surface Mount Keystone Box with two way adhesive tape and screws
- 4 Port Surface Mount Keystone Box with two way adhesive tape and screws
- Mounting Box is used to surface mount a flush plate
- 12 Port Surface Mount Keystone Box with two way adhesive tape and screws
- 3 Port Surface Mount Keystone Box, Enclosed



Maximum cable pulling tension must be limited to 25 lbs. Too much tension can disturb the pairs and threaten performance. Bending radius should not be more than four times the cable diameter. The typical bend radius for Category 6A is 1.25 Inch.

- NW-S1D
- NW-S2D
- NW-3FM
- NW-S4D
- NW-S6D

- 1 Port Surface Mount Keystone Box with door & two way adhesive tape and screws
- 2 Port Surface Mount Keystone Box with door & two way adhesive tape and screws
- 3 Port Furniture Module accepts all NWT Multimedia Keystone Jacks
- 4 Port Surface Mount Keystone Box with door & two way adhesive tape and screws
- 6 Port Surface Mount Keystone Box with door & two way adhesive tape and screws



## TELEPHONE JACKS

NWT offers a wide selection of smooth surface and designer style Flush Mount Jacks to compliment today's office decor. UL/CUL or CSA approved for superior performance.

NW-41A4	4C Connecting Block, White
NW-504W	4C Universal Jack Assembly for Wall Phone
NW-104DR-W	4C Surface Mount Jack, with door
NW-1044W	Duplex 4CX4C Surface Mount Jack
NW-104W	4C Surface Mount Jack
NW-202FW	Duplex CATV Flush Mount Jack with 2 X F81 connectors
NW-2044W	Duplex 4CX4C Smooth Flush Mount Jack
NW-204FW	Combo 4C X F81 Smooth Flush Jack
NW-20FW	CATV Smooth Flush Mount Jack with F81 connector
NW-204SW	4C Smooth Flush Mount Jack



**NOTE:**

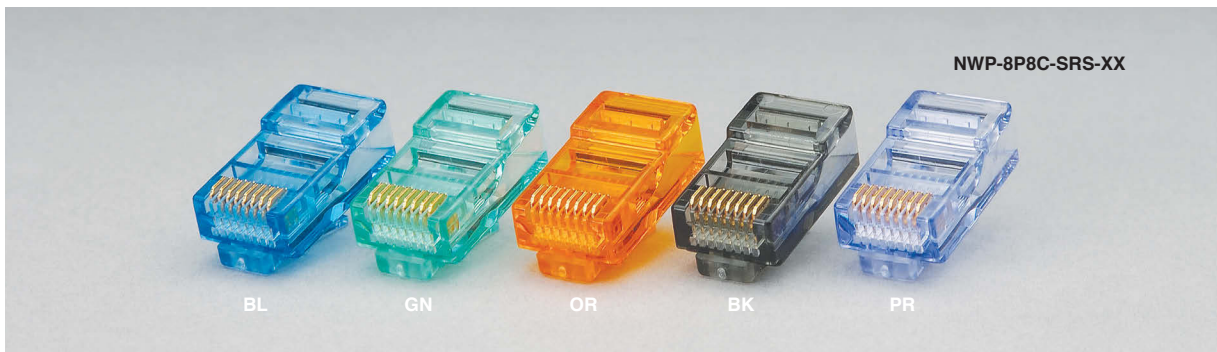
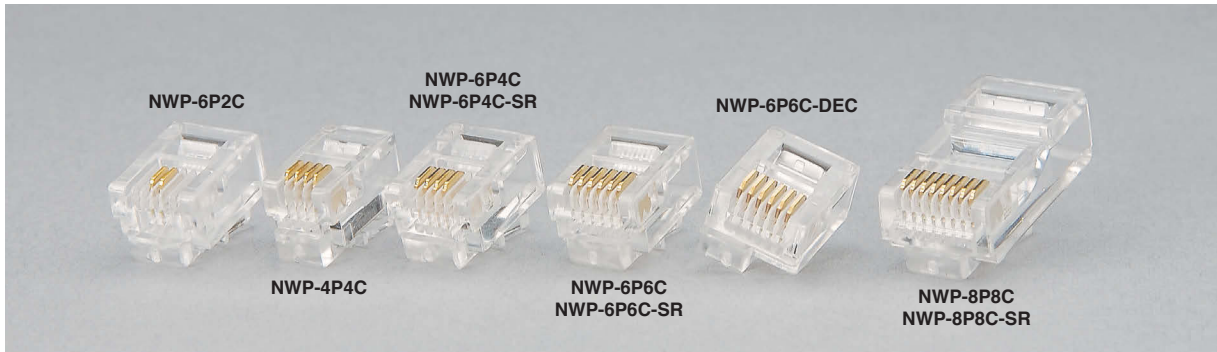
Some jacks are also available in Ivory colour, please call customer service.



NW-704	4C Cord Coupler
NW-804	4C T-Adapter, White
NW-104OD	4C Outdoor Surface Jack, Ivory
NW-20FDW	CATV Designer Flush Jack with F81 connector
NW-204FDW	Combo 4C X F81 Designer Flush Jack
NW-204DR-W	4C Designer Flush Mount Jack, with dust door
NW-204DW	4C Designer Style Flush Jack Mount
NW-2044DW	Duplex 4CX4C Designer Style Flush Mount Jack

## MODULAR PLUGS

New World Telecom (NWT) Modular Plugs are CSA approved with 50 micro-inch gold plating. There are a variety of plugs available from stock for stranded and solid wire. Applications include voice and networking patch cords.



Part Number	Description
<b>Modular Plugs for Stranded Cable</b>	
NWP-6P2C	Modular plug for 2 conductor stranded line cord
NWP-4P4C	Modular plug for 4 conductor handset cord
NWP-6P4C	Modular plug for 4 conductor stranded line cord
NWP-6P6C	Modular plug for 6 conductor stranded line cord
NWP-6P6C-DEC	Modular plug for 6 conductor stranded line cord DEC type, offset & MMJ
NWP-8P8C	Modular plug for 8 conductor stranded Cat.5E cable
NWP-8P8C-C6R	Category 6 Modular plug with wire guide for 8 conductor stranded cable
NWP-8P8C-SH	8P8C Modular plug for shielded stranded cable
<b>Modular Plugs for Solid Cable</b>	
NWP-6P4C-SR	Modular plug for 4 conductor solid cable
NWP-6P6C-SR	Modular plug for 6 conductor solid cable
NWP-8P8C-SR	Modular plug for 8 conductor solid Cat.5E cable
NWP-8P8C-PLSR	Modified Latch Modular Plug for Patch Cord 8P8C for solid & stranded cable
NWP-8P8C-SR6	Category 6 Modular plug with wire guide for 8 conductor solid cable.
NWP-8P8C-SHSR	8P8C Modular plug for shielded solid cable
NWP-8P8C-SRS-XX	Modular Plug for Patch Cord 8P8C for solid & stranded cable

XX = Colours - BL = Blue, GN = Green, OR = Orange, BK = Black, PR = Purple



## PUSH & SEAL CONNECTORS (COMPRESSION TYPE)

NWT's Push & Seal Connectors include the F-Type, BNC and RCA nickel and gold plated connectors for RG59 and RG6 dual and quad shield cables. These connectors are also available in L-type configuration to save space. Push & Seal connectors from New World Telecom will simplify the in-field termination process and ensure professional and reliable connections.



NW-R-PS6-XX	Push & Seal, RCA-Male for RG6, Nickel Plated
NW-BNC-PS6L	Push & Seal, BNC-Male for RG6, L-type
NW-BNC-PS6	Push & Seal, BNC-Male for RG6, Nickel Plated
NW-BNC-PS59	Push & Seal, BNC-Male for RG59, Nickel Plated
NW-F-PS6QG	Push & Seal, F Connector for RG6 Quad Shield, Gold Plated
NW-F-PS6G	Push & Seal, F Connector for RG6, Gold Plated
NW-F-PS6Q	Push & Seal, F Connector for RG6 Quad Shield, Nickel Plated
NW-F-PS59	Push & Seal, F Connector for RG59, Nickel Plated
NW-F-PS6	Push & Seal, F Connector for RG6, Nickel Plated
NW-F-PS6L	L – Type Push & Seal, F Connector For RG6, Nickel Plated
NW-F-PS6QL	L – Type Push & Seal, F Connector For RG6 Quad Shield, Nickel Plated



## COUPLERS & CONVERTERS

NW-BNC-13	BNC Coupler, Female-Female
NW-F81-2GHZ	F81 Bulkhead Coupler, Female-Female
NW-RCA-F	RCA Male to F-type Female
NW-RCA-BNC	RCA Male to BNC Female Converter
NW-BNC-F	BNC Male to F-type Female Converter
NW-BNC-13B	BNC Bulkhead Coupler, Female-Female
NW-BNC-RCA	BNC Male to RCA Female Converter
NW-FL	F81 Male to Female - "L" Type



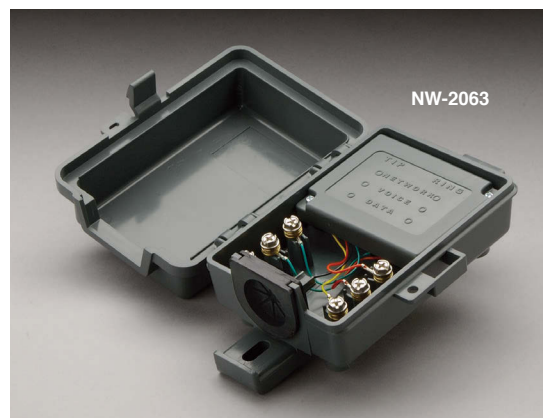


## xDSL PRODUCTS

The xDSL Filter isolates the telephone device from incoming xDSL signal. In addition the filter also protects the xDSL modem from random impedance variations generated by the telephone device and ensures its proper operation.

### ELECTRICAL SPECIFICATIONS:

- Filter topology = 2-pole low bypass.
- Loading capacity on the telephone port is 33nF.
- The 3 dB cut-off point from CO line to telephone port is 9 kHz +/- 1.5 kHz
- Attenuation distortion relative to 1 kHz, 300 kHz and 3400 kHz is +/- 1 dB maximum.
- DC resistance through T & R to telephone port is less than 30 ohms maximum.
- All devices have 6P4C modular plug and jacks.
- Filter one is applied to R1 (position 3) and T1 (position 4)
- Filter two is applied to R2 (position 5) and T1 (position 2)



NW-2063	Out-Door POT Splitter
NW-DSL1	xDSL Filter for 1 Line Telephone device
NW-2060-L1	xDSL Filter/Conditioner for 1 Line Telephone device
NW-2060-L2	xDSL Filter/Conditioner for 2 Line Telephone device
NW-2064-L1	T- In Line xDSL Filter/Conditioner for 1 Line Telephone device
NW-2064-L2	T- In Line xDSL Filter/Conditioner for 2 Line Telephone device
NW-2064-L1D	T- In Line xDSL Filter/Conditioner for 1 Line Telephone device + xDSL Modem
NW-2061-L1D	Wall Mount xDSL Filter/Conditioner for 1 Line Telephone device + xDSL modem
NW-2061-L2D	Wall Mount xDSL Filter/Conditioner for 2 Line Telephone device + xDSL modem
NW-2061-L1	Wall Mount xDSL Filter/Conditioner for 1 Line Telephone device
NW-2061-L2	Wall Mount xDSL Filter/Conditioner for 2 Line Telephone device
NW-2062	Indoor POT Splitter



## MOUNTING BRACKETS

The NWT line of Fasteners are used for low voltage accessories. Each unique bracket allows you to position a standard low voltage Class 2 system faceplate anywhere on walls.

- Eliminate the need for an electrical box.
- Make "wire fishing" easier.
- Ideal for network jacks, phone jacks, cable outlets and other multimedia outlets.
- Great for drywall applications.

NW-MPLS	Mounting Bracket single gang
NW-2MPLS	Mounting Bracket double gang
NW-MB1	Mounting Bracket single gang
NW-MPD	Pre-drywall Mounting Bracket single gang



NW-J-4L	4" L-type J-Hook, 18 AWG Galvanized
NW-J-2L	2" L-type J-Hook, 18 AWG Galvanized
NW-J-4S	4" Straight-type J-Hook, 18 AWG Galvanized
NW-J-2S	2" Straight-type J-Hook, 18 AWG Galvanized
NW-J	J-hook for drop ceiling wire maximum of 12 cables can be used

## INDUSTRIAL CABLING SYSTEM (CATEGORY 6)

### For speeds up to 10 Gbps

- Keystone Jack features a 110 IDC termination on the back and an 8P8C Jack on the front
- Patch Cord features a protective plug that screws into the jack
- When mated they provide an IEC IP67 rated seal
- Protect plugs and jacks from dust, oil, water and other contaminants
- Prevents accidental disconnects from industrial vibration
- Patch cords and jacks are Category 6 compliant, backward compatible to Cat. 5E
- Can be wired for T568A or T568B



NW-P1-IND	1 Port Industrial Faceplate, IEC IP67 rated
NW-P2-IND	2 Port Industrial Faceplate, IEC IP67 rated
NW-108K6-IND	Cat. 6 Industrial Keystone Jack, 110 IDC to 8P8C, IEC IP67 rated
NWL-CT6-3-IND	3 ft. Category 6 Industrial Patch Cord, IEC IP67 rated
NWL-CT6-10-IND	10 ft. Category 6 Industrial Patch Cord, IEC IP67 rated





## CATV BALUNS

The CATV Balun allows traditional 75-ohm coaxial cable to be replaced by one pair UTP in the CATV, VHF and FM video signal environments. Used in pairs, the CATV Balun allows broadband CATV equipment to be integrated into structured cabling systems for schools, government, offices, hospitals, financial institutions, hotels and residential complexes.

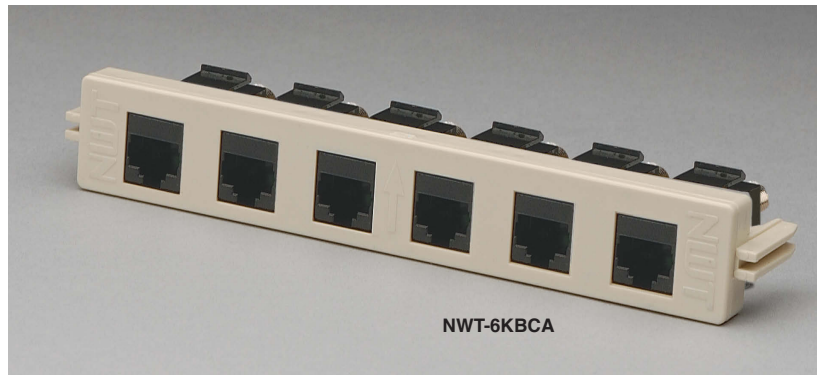
The CATV Balun works in conjunction with RF splitters, active local channel antennas, combiners, amplifiers and cable modems for a total RF cabling solution. Available in several configurations including Standard type, Tool-less IDC and Modular Keystone style to mount on Work Area Outlets.

NW-BCA-S	CATV Balun, 8C (RJ 45) to F-type (male) Standard type
NW-BCA-K	CATV Balun, 8C (RJ45) to F-type (female) Keystone type
NWT-6KBCA	6 Port CATV Balun module, 8C (RJ45) to F-type (female) for BIX-type mounts
NW-BCA-I	CATV Balun, 8C (RJ45) to F-type (male), IDC w/cover
NWPP-16KJ-BCA	16 Port CATV Balun Patch Panel 19" rack mount, 8C (RJ45) to F-type (female)



### SPECIFICATIONS

- Bandwidth: 5MHz~550MHz.
- Insert Loss: 3dB at CATV channels 2~6
- Return Loss: 18dB at 10MHz~550MHz.
- Common Mode Rejections: 20dB at 40MHz~500MHz.
- Max. Distance: 100m via Cat.5e UTP cable



## CCTV BALUNS

The CCTV Power & Data (Thru Balun allows video signals and remote power & control data to be transmitted via a single unshielded twisted pair (UTP) cable for more versatile cabling. The CCTV Power & Data Thru Balun is used in pairs to allow you to eliminate more expensive coaxial cable, including coupling signals from remote video cameras to display systems, video capture, security and surveillance monitoring applications.

Existing twisted pair infrastructure such as telephone cable and Cat.5e or Cat.6 networking cables can be used. All of our Baluns are 100% tested for reliability and durability to guarantee your signal integrity.

NW-BCC-PDC	CCTC Power and Data Thru for PTZ, UTP 8P8C Jack to Male BNC cord, DC Power cord (1/3/+, 2/6/-) & Data cord (PTZ 5/-, 4/+)
NW-BCC-PDCP	CCTC Power and Data Thru for PTZ, UTP 8P8C Jack to Male BNC cord, DC Power Plug cord (1/3/+, 2/6/-) & Data cord (PTZ 5/-, 4/+)
NW-BCC-BPC	CCTV Power Thru Balun, UTP 8P8C Jack to Male BNC cord & DC Power cord (1/3/5/+, 2/4/6/-)
NW-BCC-S	CCTV Balun, 8C (RJ45) to BNC (male), pins 4/5, for indoor/outdoor use
NW-BCC-SC	CCTV Balun, 8C (RJ45) to BNC Cord (male), pins 4/5, for indoor/outdoor use
NW-BCC-I	CCTV Balun, Tool-less IDC to BNC (male),w/ cover



## 4 PORT CCTV BALUNS

This 4 port balun allows transmission of 4 sets of real time color or monochrome video signal up to 680 meters over Cat.5e UTP cable. This 4 port balun is designed for small CCTV installations where size and space are restricted.

### Specifications

- Bandwidth: Video DC~8MHz
- Insertion Loss:  $\leq 2$ dB.
- Return loss:  $\geq 15$ dB.
- Common Mode Rejection:  $\pm 40$ dB at 8MHz.
- Impedance: 75-ohm.
- Cat. 5E UTP Cable
- Impedance: 100 ohm at 1MHz.
- Max. Capacitance: 20 pf/ ft.
- Attenuation: 6.6dB/1000ft at 1MHz.
- Transmission Distance: 2,230ft (680m).
- Dimension (mm): H24.0 x W81.0 x D60.0

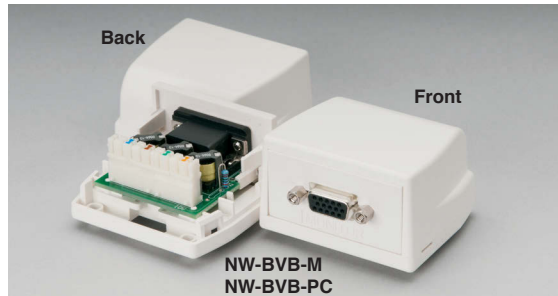


NW-BCC-4F	4 Port CATV-F81 to RJ45 Balun
NW-BCC-4B	4 Port CCTV-BNC to RJ45 Balun



## VGA BALUNS

The VGA baluns offer an ideal link between data output equipment and VGA monitors using 4-pair Cat.5e shielded twisted-pair cabling, eliminating the cost and clutter associated with heavier VGA cables. With the VGA baluns at both the transmission and receiving ends of your setup, you can enjoy an impressive transmission distance of up to 450ft (137m) and up to 1280 X 1024 pixel resolution.



NW-FPM-M	Flush plate module for monitor end, 110 IDC to VGA HD15
NW-FPM-PC	Flush plate module for PC end, 110 IDC to VGA HD15
NW-BV-PC	STP RJ45 to Female VGA HD15 Connector, for PC end
NW-BV-M	STP RJ45 to Female VGA HD15 Connector, for Monitor end
NW-BVB-M	Surface Box, 110 IDC to VGA HD15, Monitor end
NW-BVB-PC	Surface Box, 110 IDC to VGA HD15, PC end

NW-CV92B	2 port VGA Splitter
NW-CV94B	4 port VGA Splitter
NW-CV98B	8 port VGA Splitter

## VGA SPLITTERS



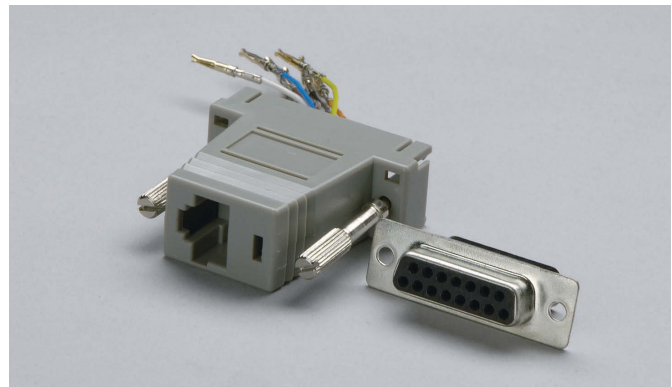
## DB-MODULAR ADAPTER KITS

DB-Modular Adapter Kits from New World Telecom are fully configurable according to your own wiring requirements. Simply configure the DB connector, snap it on and plug in your data patch cord. Its that easy. New World Telecom also offers custom cable assemblies on order basis, please check with our order desk.

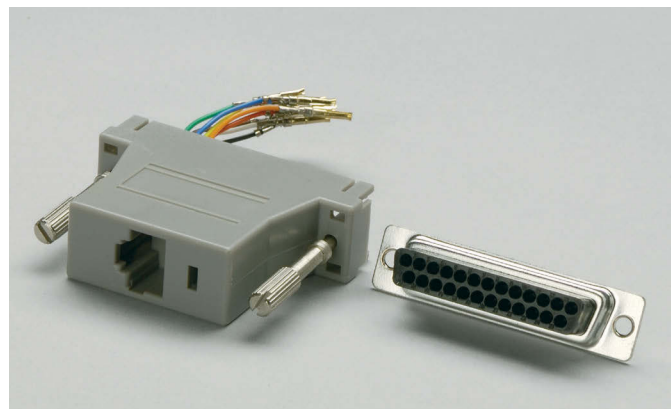
NWD-096M	DB9 male to 6P6C jack
NWD-096F	DB9 female to 6P6C jack
NWD-098M	DB9 male to 8P8C jack
NWD-098F	DB9 female to 8P8C jack



NWD-156M	DB15 male to 6P6C jack
NWD-156F	DB15 female to 6P6C jack
NWD-158M	DB15 male to 8P8C jack
NWD-158F	DB15 female to 8P8C jack



NWD-256M	DB25 male to 6P6C jack
NWD-256F	DB25 female to 6P6C jack
NWD-258M	DB25 male to 8P8C jack
NWD-258F	DB25 female to 8P8C jack



## BIX -TYPE PRODUCTS

NWT BIX-Type Products from New World Telecom are superior in design and quality, simplifying moves, additions and changes for UTP voice connection systems. BIX type hardware modularity reduces congestion and allows future growth potential for UTP voice connection systems.

### Technical Specifications:

#### Materials:

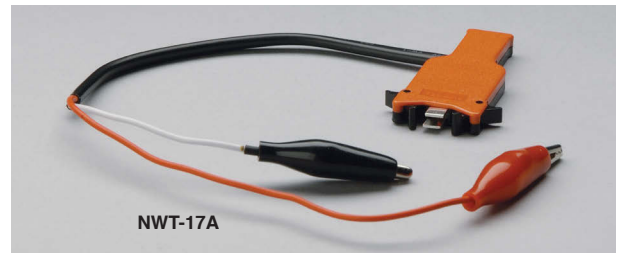
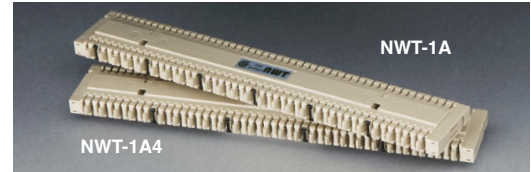
- Housing material: Fire-retardant thermoplastic
- IDC clips: Phosphorus bronze with tin plating over nickel

#### Mechanical Characteristics:

- Connection: 22, 24 & 26 AWG plastic insulated solid copper conductors
- Durability: 200 Insertions.

#### Electrical Characteristics:

- Dielectric Strength: 1000 Volts RMS at 60 Hertz for 1 Minute
- Current Rating: 1.5 Amperes maximum
- Insulation Resistance: 100 mega ohm minimum between clips
- Contact Resistance: 1 milli-ohm per contact

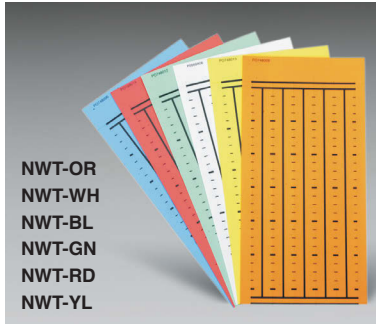


NWT-1A	Bix Type connector 5 Pair marking
NWT-1A4	Bix Type connector 4 Pair marking
NWT-20A	Bix Type Designation Strip
NWT-10C	Bix Type 2 Position Bracket
NWT-10B	Bix Type 4 Position Bracket
NWT-10A	Bix Type 10 Position Bracket
NWT-12E	Bix Type 12 Position Bracket
NWT-19A	Bix Type Distribution Ring
NWT-17A	Bix Type Test Clip, 1 Pair
NWT-16A	Bix Type Punch Tool

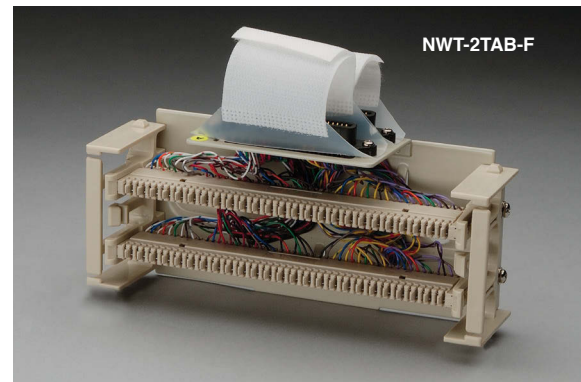
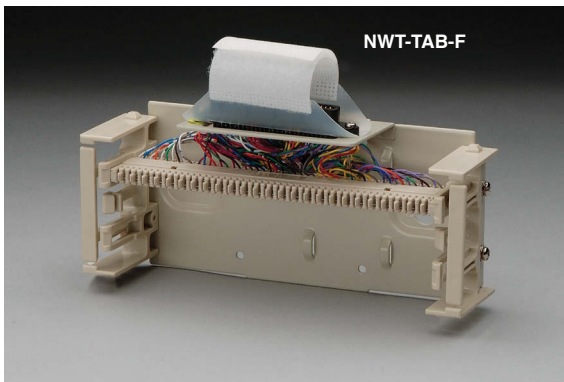
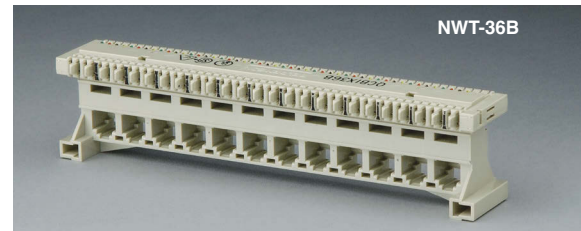
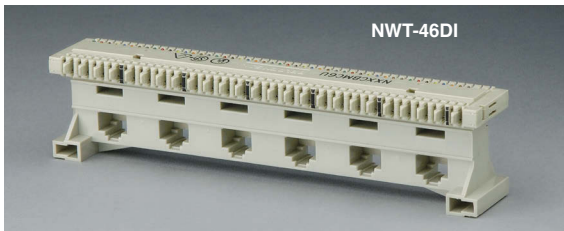
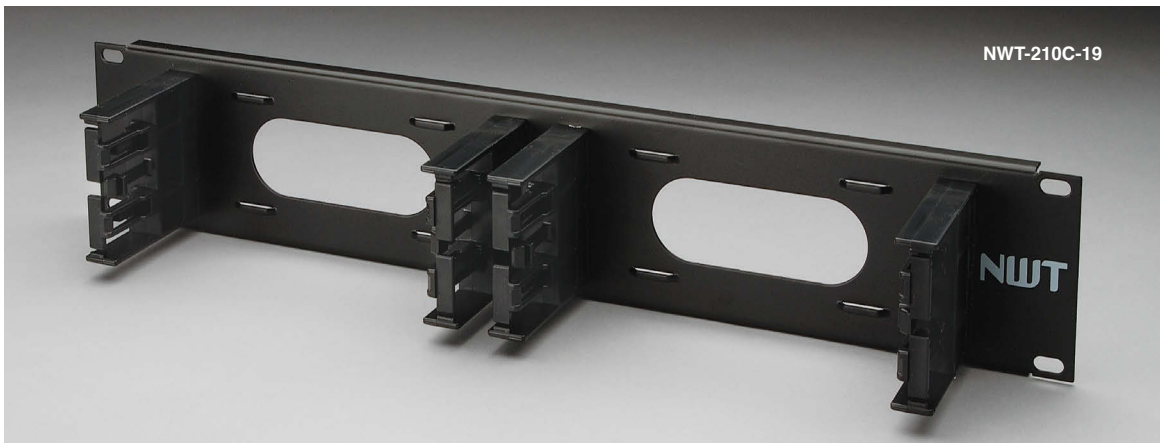


**BIX -TYPE PRODUCTS**

NWT-OR	Orange Labels
NWT-WH	White Labels
NWT-BL	Blue Labels
NWT-GN	Green Labels
NWT-RD	Red Labels
NWT-YL	Yellow Labels

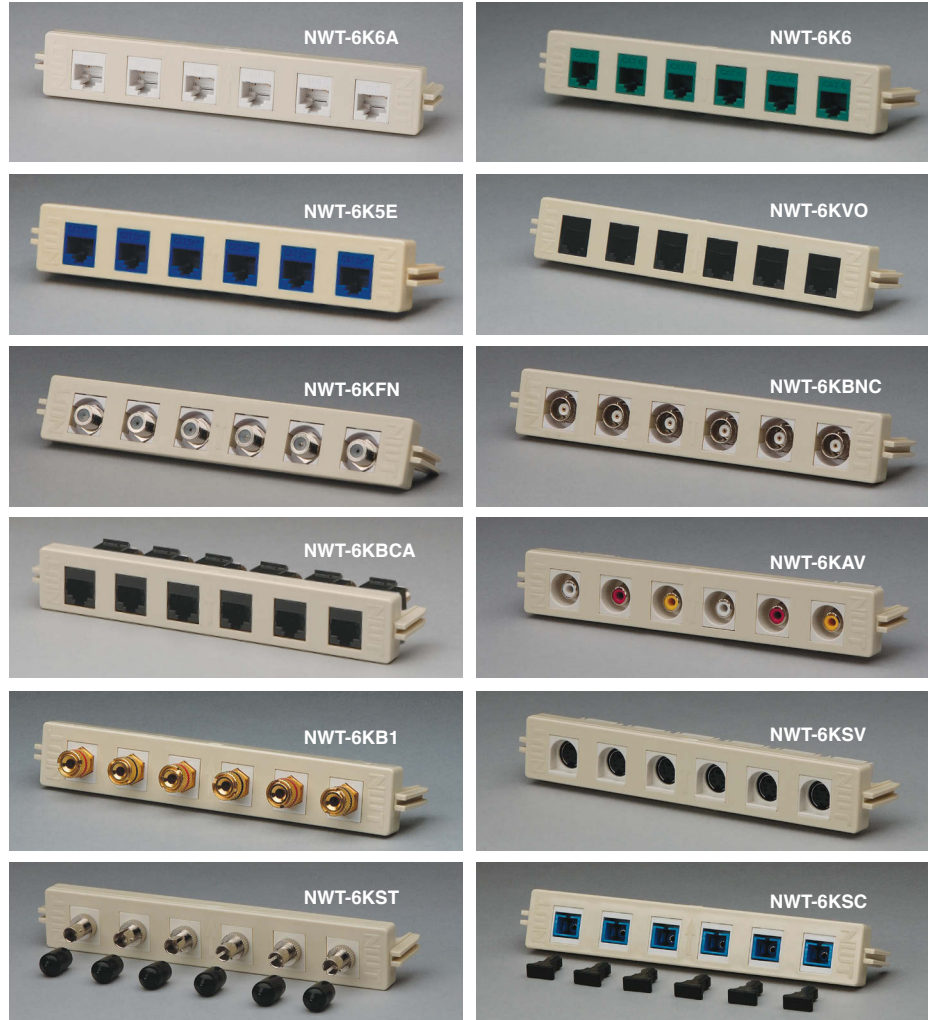


NWT-210C-19	100 pair, 4 X BIX connector, 19" rack mount
NWT-46DI	8C X 6 port modular (T568A) Bix Type
NWT-36B	4C X 12 port modular Bix Type
NWT-TAB-F	Trunk Access Block, 1 RJ21X female to 1 NWT-1A fully wired
NWT-2TAB-F	Trunk Access Block, 2 RJ21X female to 2 NWT-1A fully wired



## MULTIMEDIA CROSS CONNECT SYSTEM (BIX MOUNT)

New World Telecom is introducing its Multimedia Cross Connect System. The system uses 6 port multimedia modules to be used for horizontal distribution cabling and can be mounted on BIX-type mounts. 6 Port modules come in several multimedia configurations that includes Category 6A, Category 6, SC-Fiber, ST-Fiber, BNC, F-Type, S-Video to UTP and RCA to UTP, CATV Balun. The 6 port modules are low profile and require only one space on a BIX-type mount.

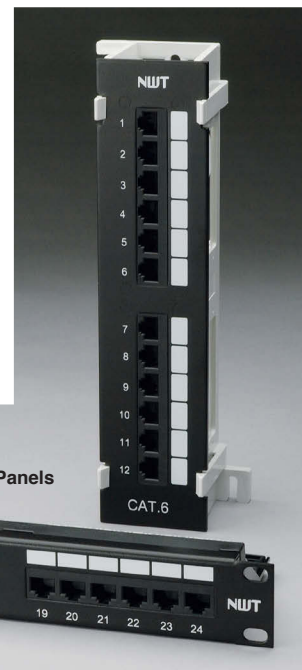


NWT-6K6A	6 Port, Category 6A Module BIX Mount
NWT-6K6	6 Port, Category 6 Module BIX Mount
NWT-6K5E	6 Port, Category 5e Module BIX Mount
NWT-6KVO	6 Port, Voice Module BIX Mount
NWT-6KFN	6 Port, F-type (F-F) Module BIX Mount
NWT-6KBNC	6 Port, BNC (F-F) Module BIX Mount
NWT-6KBCA	6 Port, F-type to RJ45 Balun Module BIX Mount
NWT-6KAV	6 Port, Audio Video RCA to UTP Module BIX Mount
NWT-6KB1	6 Port, 3 way binding post Module BIX Mount
NWT-6KSV	6 Port, S-Video to 110 IDC Module BIX Mount
NWT-6KST	6 Port, ST Fiber Module BIX Mount
NWT-6KSC	6 Port, SC Fiber Module BIX Mount

## PATCH PANELS

New World Telecom is now introducing its Category 6A (Augmented) Patch Panels. NWT's 6A UTP Solution exceeds Category 6A performance requirements for 10G Base-T application standard as set forth by TIA 568-B.10. This is supported by providing an efficient and effective method of reducing alien crosstalk (AXT) from neighboring connectors. Each panel is designed to be used with NWT Category 6A Keystone Jacks to achieve peak 10GBPS performance. Such performance will enable your network to support current technologies such as 10/100/1G/10G Ethernet as well as advanced new Internet Protocol-based services.

The NWT Category 6A Patch Panel is an essential element of NWT's Category 6A UTP end-to-end Cabling Solution. The Category 6A Keystone Jacks exceed all channel performance requirements in TIA-568-B.2-10 from 1 MHz to 550MHz to support the IEEE 802.3an standard for 10 Gigabit Ethernet over UTP Cable.



Part Number	Description	Colour
NWPP-824-C6A	<b>Category 6A (Augmented), 550 MHz, 10 Gbps rated</b> 24 Port, Cat. 6A Patch Panel, spaced design, 19"	Black
NWPP-812-C6-WM	<b>Category 6 Patch Panels (10 Gbps rated)</b> 12 Port Category 6 Vertical Mount With Wall Bracket	Black
NWPP-824-C6	24 Port Category 6 Patch Panel, 19" rack mount	Black
NWPP-848-C6	48 Port Category 6 Patch Panel, 19" rack mount	Black
NWPP-896-C6	96 Port Category 6 Patch Panel, 19" rack mount	Black
NWPP-812-WM	<b>Category 5E Patch Panels (1 Gbps rated)</b> 12 Port Cat.5e Vertical Mount With Wall Bracket	Black
NWPP-824-T568A	24 Port, 19" rack mount	Black
NWPP-848-T568A	48 Port, 19" rack mount	Black
NWPP-896-T568A	96 Port, 19" rack mount	Black
NWPP-424-USOC	<b>Category 3 Voice Patch Panel (16 Mhz rated)</b> 24 Port, 4C USOC, Category 3 Voice Patch Panel	Black

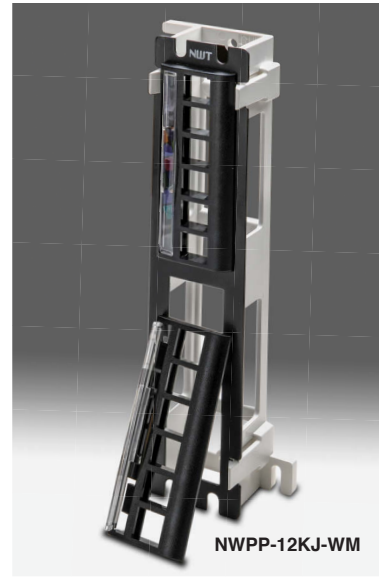


## BLANK PATCH PANELS

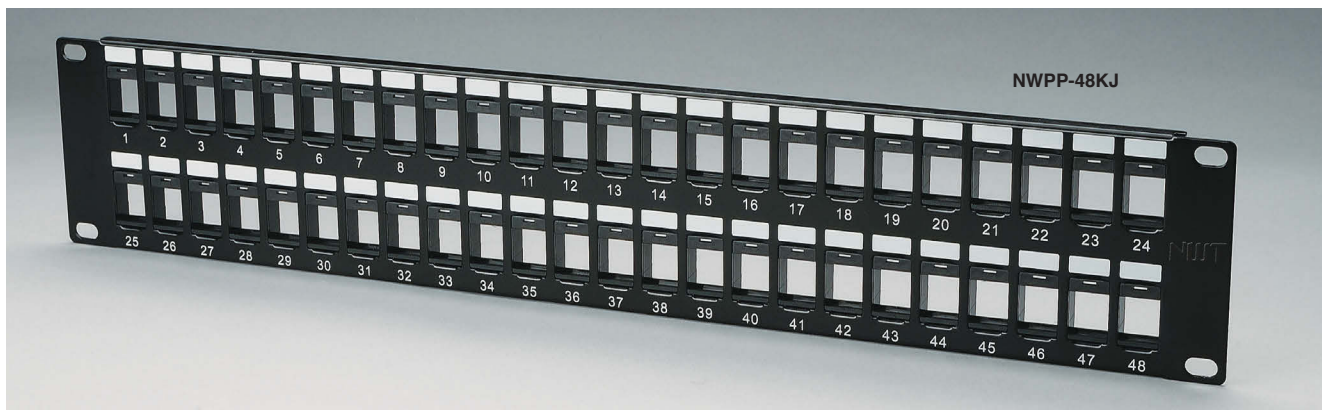
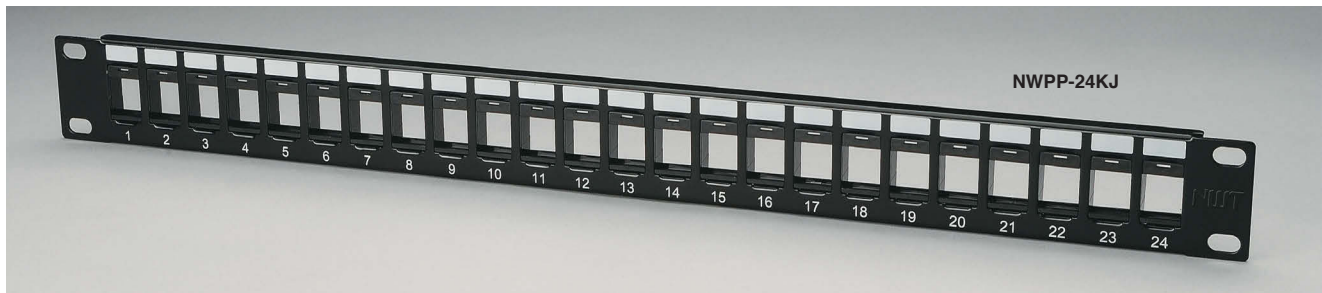
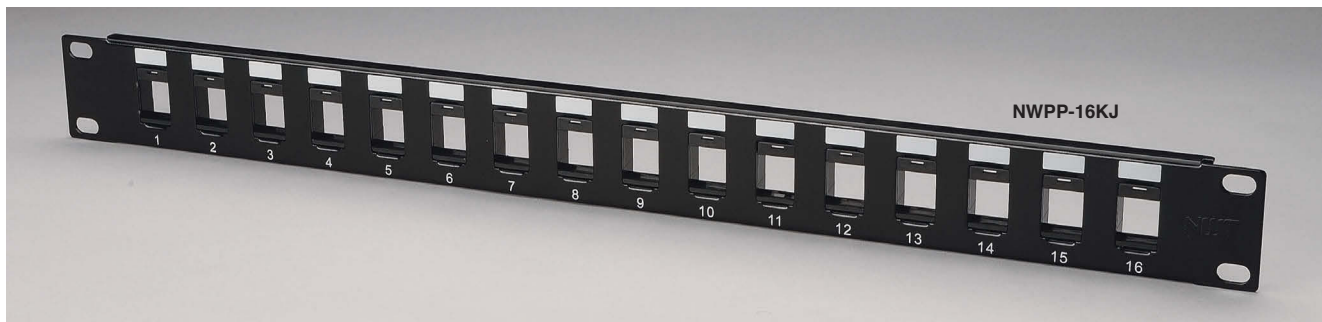
Blank Patch Panels from New World Telecom are designed for multimedia applications. Built-in retainer plastic module keeps the keystone jacks flush on panel for aesthetics.

### Features

- 19" EIA Rack mount
- Designed to support the distribution of multimedia applications
- 16 port is 1RU and accepts any NW-108 Keystone jacks.
- 24 port is 1RU and accepts any low profile NW-108 Keystone jacks
- 48 port is 2RU and accepts any low profile NW-108 Keystone jacks



Part Number	Description	Colour
<b>Blank Panels for Keystone Jacks</b>		
NWPP-12KJ-WM	12 Port Blank Panel vertical mount with wall bracket	Black
NWPP-16KJ	16 Port Blank Panel for keystone jacks, 19" Rack Mount	Black
NWPP-24KJ	24 Port Blank Panel for keystone jacks, 19" Rack Mount	Black
NWPP-48KJ	48 Port Blank Panel for keystone jacks, 19" Rack Mount	Black



## NETWORK HOMES

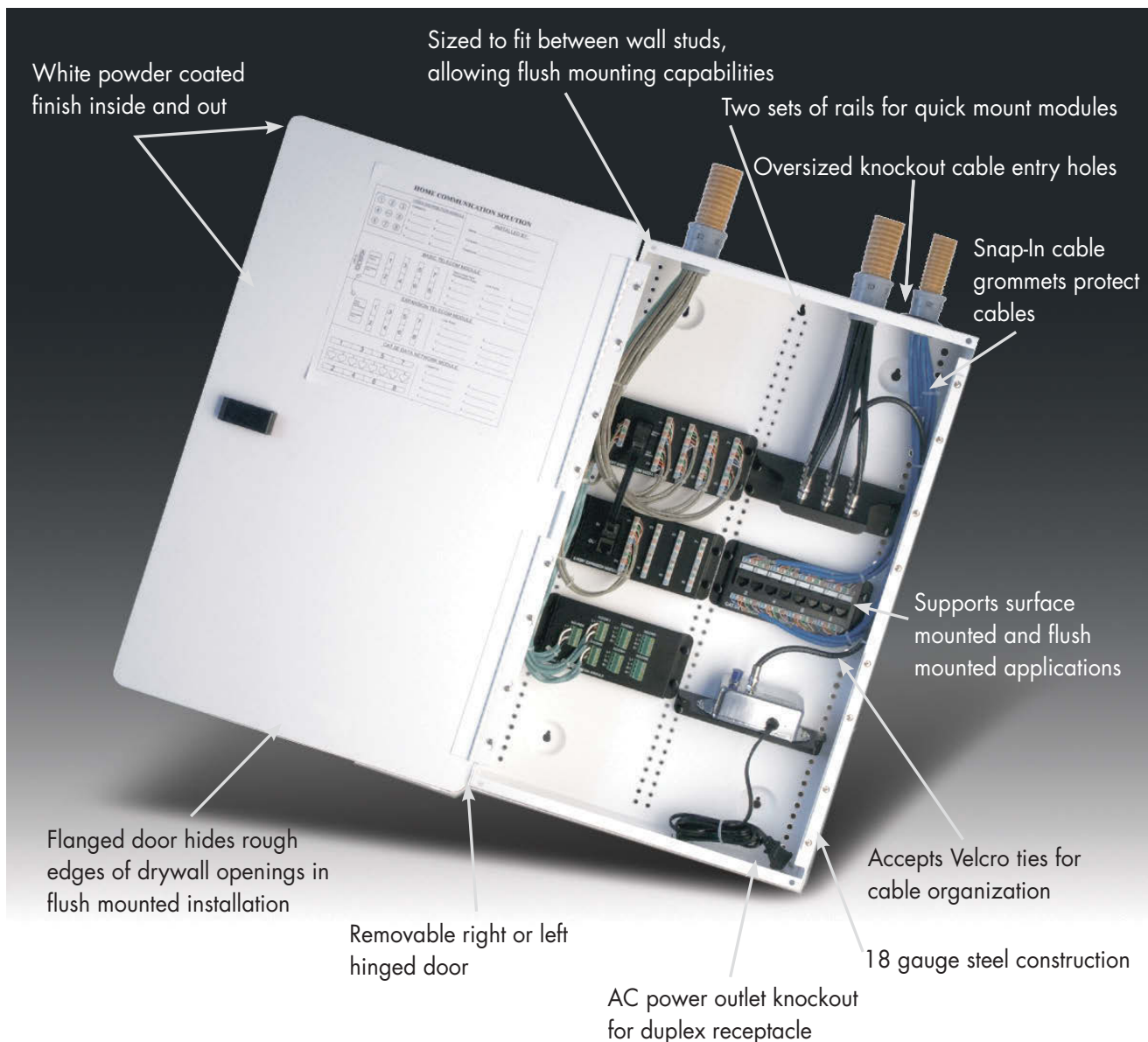
New World Telecom is introducing "Network Homes" for today and future structured cabling of homes. All of our products are manufactured in accordance with EIA / TIA – 570A Residential Telecommunications Cabling Standards.

This standard promotes star configuration cabling (home run) of UTP and Coaxial cable. The standard recognizes two grades of cabling.

Grade one: One UTP and one coaxial series 6 (RG6) to each location.

Grade two: Two UTP and two coaxial series 6 (RG6) to each location.

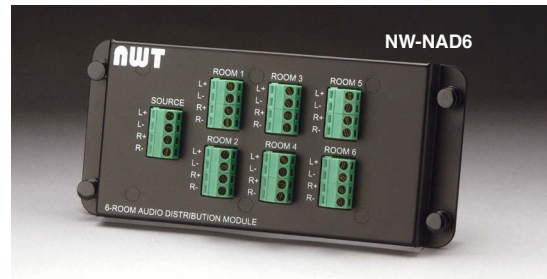
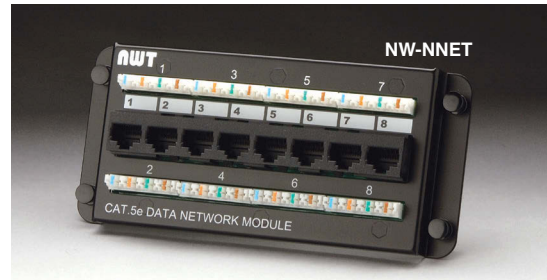
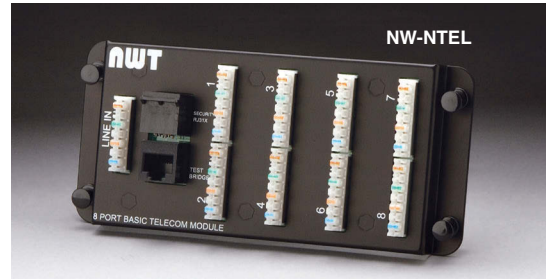
With UTP cable, using Category 6A delivers optimum performance for today and extra headroom for future.





## NETWORK HOMES

New World Telecom offers a complete range of Residential Structured Cabling Products. They are designed to integrate Internet, Computer Networking, Telecommunications, Entertainment, Safety and Automation products into a central enclosure. Several modules are available that allow builders the freedom to customize the basic system.



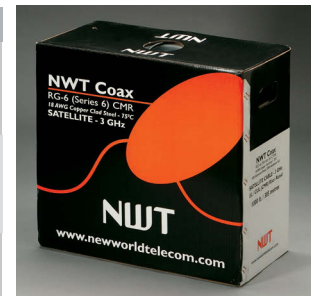
Part Number	Description	Colour
NW-N14	14" Enclosure, 14"H X 14"W X 4"D	White
NW-N24	24" Enclosure, 24"H X 14"W X 4"D	White
NW-N36	36" Enclosure, 36"H X 14"W X 4"D	White
NW-N48	48" Enclosure, 48"H X 14"W X 4"D	White
NW-NTEL	8 Port Telecom Module with RJ31X and Demarcation Jack	
NW-NEXP	Telecom Expansion Module, 8 Connectors	
NW-NNET	8 Port Network Module	
NW-NAD6	6 Port Audio Distribution Module	
NW-NVDM8	8 Port Video Distribution F-Type	
NW-NVA	Video Amplifier Module F-Type	

**WIRE & CABLE**

New World Telecom offers cable that is used in voice and networking applications. Fabricated on ultra-modern equipment, these products are guaranteed to meet your installation and performance expectations. The products are tested to the rigors of ANSI / TIA /EIA 568-B.2-10 standards. They also meet the latest UL, CUL, CSA and National Electric Code requirements for inside wiring type cables.

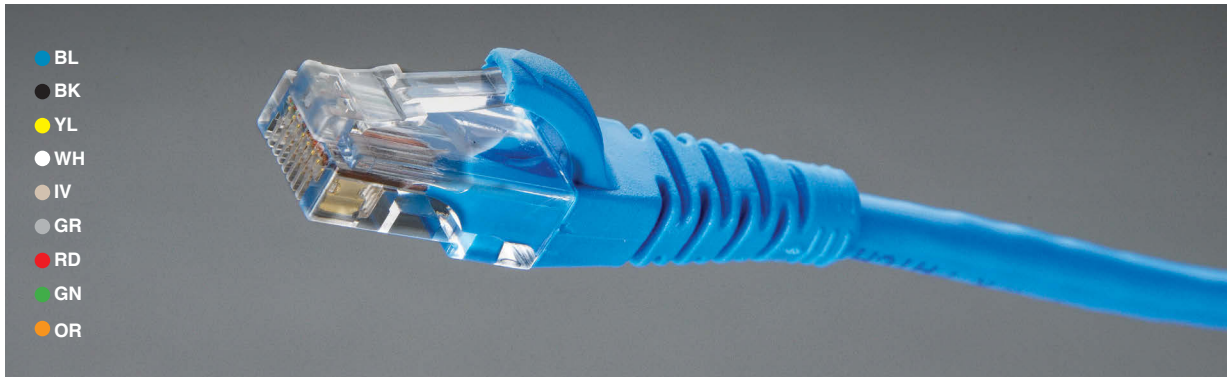


Part Number	Description	Colour
NFT4-424-L6A	<b>Category 6A Cable</b> Cat. 6A, 4 pr., FT4, CMR, solid 23 AWG, 1000 ft./bx.	Blue
NFT6-424-L6A	Cat. 6A, 4 pr., FT6, CMP, solid 23 AWG, 1000 ft./bx.	Blue
NFT4-424-L6	<b>Category 6 Cable</b> Cat. 6, 4 pr., FT4, CMR, solid 23 AWG, 1000 ft./bx.	Blue
NFT6-424-L6	Cat. 6, 4 pr., FT6, CMP, solid 23 AWG, 1000 ft./bx.	Blue
NFT4-424-L5E	<b>Category 5E, 100 Mhz. Cable</b> Cat. 5E, 4 pr., FT4, CMR, solid 24 AWG, 1000 ft./bx.	Blue, White
NFT6-424-L5E	Cat. 5E, 4 pr., FT6, CMP, solid 24 AWG, 1000 ft./bx.	Blue, White
NFT4-324-L3	<b>Category 3 (16 MHz) for Voice</b> 3 pr., FT4, CMR, solid 24 AWG, 1000 ft./bx.	Grey
NFT6-324-L3	3 pr., FT6, CMP, solid 24 AWG, 1000 ft./bx.	White
NFT4-424-L3	4 pr., FT4, CMR, solid 24 AWG, 1000 ft./bx.	Grey
NFT6-424-L3	4 pr., FT6, CMP, solid 24 AWG, 1000 ft./bx.	White
NFT4-25PR	25 pr., FT4, CMR, solid 24 AWG, 1000 ft./bx.	Grey
NFT6-25PR	25 pr., FT6, CMP, solid 24 AWG, 1000 ft./bx.	White
NCC-1241	<b>Cross Connect Wire</b> 1 Pair, WH/ BL – BL/ WH, 24 AWG, 1000'/RI	
NCC-1242	1 Pair, YL/ BL – BL/ YL, 24 AWG, 1000'/RI	
NCC-2241	2 Pair, WH/ BL – BL/ WH, WH/ OR – OR/ WH, 24 AWG, 1000'/RI	
NFT4-RG6-3G-01	<b>RG6, 3GHz. Co-axial cable</b> RG6, 3GHz. Coaxial cable, 1000 ft./ box	Black



## PATCH CORDS

Premium High Performance 100% Continuity & Transmission Tested. 24 AWG stranded flex-wire for longer bend fatigue life. Modular plugs are 50 micro-inch gold plated. UL and CUL approved, ETL verified, exceeds EIA / TIA-568-B.2-10 specifications of Category 6A, 6 and 5E Standards.



Part Number	Description	Colour
<b>Category 6A (Augmented) Patch Cords, 550 MHz., 10 Gbps rated</b>		
NWL- CT6A-2-BL	2 ft. Category 6A Patch Cord	BL=Blue
NWL- CT6A-3-BL	3 ft. Category 6A Patch Cord	BL=Blue
NWL- CT6A-7- BL	7 ft. Category 6A Patch Cord	BL=Blue
NWL- CT6A-10- BL	10 ft. Category 6A Patch Cord	BL=Blue
NWL- CT6A-15- BL	15 ft. Category 6A Patch Cord	BL=Blue
NWL- CT6A-25- BL	25 ft. Category 6A Patch Cord	BL=Blue
<b>Category 6 Patch Cords, 250 MHz., 10 Gbps rated</b>		
NWL-CT6-1-XX	1 ft. Category 6 Patch Cord	XX=Colour
NWL-CT6-1.5-XX	1.5 ft. Category 6 Patch Cord	XX=Colour
NWL- CT6-2-BL	2 ft. Category 6 Patch Cord	BL=Blue
NWL- CT6-3-XX	3 ft. Category 6 Patch Cord	XX=Colour
NWL- CT6-4-BL	4 ft. Category 6 Patch Cord	BL=Blue
NWL- CT6-5-BL	5 ft. Category 6 Patch Cord	BL=Blue
NWL- CT6-7-XX	7 ft. Category 6 Patch Cord	BL=Blue
NWL- CT6-10-XX	10 ft. Category 6 Patch Cord	XX=Colour
NWL- CT6-15-BL	15 ft. Category 6 Patch Cord	BL=Blue
NWL- CT6-20-BL	20 ft. Category 6 Patch Cord	BL=Blue
NWL- CT6-25-BL	25 ft. Category 6 Patch Cord	BL=Blue
<b>Category 5E Patch Cords, 100 MHz., 1Gbps rated</b>		
NWL- CT5E-1B-XX	1 ft. Category 5E Patch Cord	XX=Colour
NWL- CT5E-1.5B-XX	1.5 ft. Category 5E Patch Cord	XX=Colour
NWL- CT5E-2B-BL	2 ft. Category 5E Patch Cord	BL=Blue
NWL- CT5E-3B-BL	3 ft. Category 5E Patch Cord	BL=Blue
NWL- CT5E-5B-BL	5 ft. Category 5E Patch Cord	BL=Blue
NWL- CT5E-7B-XX	7 ft. Category 5E Patch Cord	XX=Colour
NWL- CT5E-10B-XX	10 ft. Category 5E Patch Cord	XX=Colour
NWL- CT5E-15B-BL	15 ft. Category 5E Patch Cord	BL=Blue
NWL- CT5E-25B-BL	25 ft. Category 5E Patch Cord	BL=Blue
NWL- CT5E-50B-BL	50 ft. Category 5E Patch Cord	BL=Blue
NWL- CT5E-75B-BL	75 ft. Category 5E Patch Cord	BL=Blue
NWL- CT5E-100B-BL	100 ft. Category 5E Patch Cord	BL=Blue

\* Note: Custom Colours Are Available Upon Request

Category 6A Patch Cords are backward compatible to Category 6, 5E and Category 5.

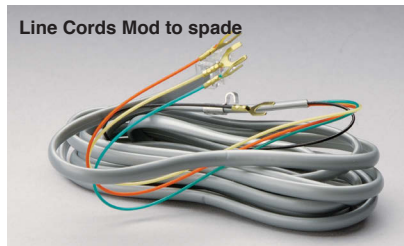
## TELEPHONE CORDS & ASSEMBLIES

### Telephone Line Cords

NWT line cords are available in various lengths and conductors. Standard colour is silver satin. Polarity is reversed for use by majority of telephone systems.

### Telephone Handset Cords

NWT handset cords are made of tinsel wire for longer flex life of coils in the handset cord, available in mod to mod version. Various colours are available from our stock.



Part Number	Description	Colour
<b>4C Telephone Line Cords (6P4C) Mod-Mod</b>		
NWL-401MM	1 ft., 4C, mod-mod	Silver satin
NWL-403MM	3 ft., 4C, mod-mod	Silver satin
NWL-407MM	7 ft., 4C, mod-mod	Silver satin
NWL-415MM	15 ft., 4C, mod-mod	Silver satin
NWL-425MM	25 ft., 4C, mod-mod	Silver satin
<b>4C Telephone Line Cords (6P4C) Mod to spade</b>		
NWL-401MS	1 ft., 4C, mod-spade	Silver satin
NWL-403MS	3 ft., 4C, mod-spade	Silver satin
NWL-407MS	7 ft., 4C, mod-spade	Silver satin
NWL-415MS	15 ft., 4C, mod-spade	Silver satin
NWL-425MS	25 ft., 4C, mod-spade	Silver satin
<b>Handset Cords 4C Mod-Mod</b>		
NWH-407MM-XX	7 ft. Handset cord, mod-mod See colours below	
NWH-415MM-XX	15 ft. Handset cord, mod-mod See colours below	
NWH-425MM-XX	25 ft. Handset cord, mod-mod See colours below	
XX=Colours	01=White      02=Black      03=Ivory 04=Almond      05=Pastel Gray 07=Chameleon gray/Ash      11=Platinum      15=Charcoal	
<b>Flat Line Cordage</b>		
NWFC-4C	4C Cordage 1000'/Reel	Silver satin
NWFC-6C	6C Cordage 1000'/Reel	Silver satin
NWFC-8C	8C Cordage 1000'/Reel	Silver satin
<b>Telco Assemblies</b>		
NWTA-MM-XX	50 Pin Telco Male to Male	Grey
NWTA-MF-XX	50 Pin Telco Male to Female	Grey
NWTA-FF-XX	50 Pin Telco Female to Female	Grey
XX = length	Available in 15', 20', 30', 60'.	



## HDMI ACCESSORIES

New World Telecom stocks the latest standards of HDMI Accessories for advanced high-speed Digital Audio and Video Data rates, greater colour depth and higher resolution digital sound. Featuring 28 AWG pure copper cable for up to 30 foot lengths, 24 AWG pure copper cable for 50 foot length with graphic equalizer built-in.



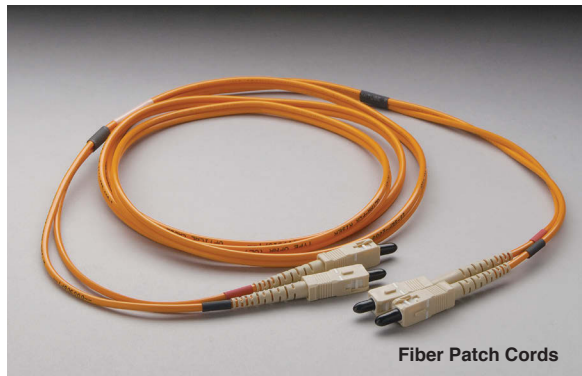
Part Number	Description
<b>HDMI Patch Cords, 3D, Internet</b>	
NWL-HDMI-3	3 ft. HDMI Patch Cord, male-male
NWL-HDMI-7	7 ft. HDMI Patch Cord, male-male
NWL-HDMI-15	15 ft. HDMI Patch Cord, male-male
NWL-HDMI-20	20 ft. HDMI Patch Cord, male-male
NWL-HDMI-30	30 ft. HDMI Patch Cord, male-male
NWL-HDMI-50	50 ft. HDMI Patch Cord, male-male
<b>HDMI Accessories</b>	
NW-HC	HDMI Coupler, Female - Female
NW-HC-L	HDMI L - Coupler, Male - Female
NW-P11HDMI	HDMI Female - Female keystone jack
NW-HDMI-SW0401	4 Port HDMI switch, 4 in-1 out with micro remote
NW-HDMI-EX1	HDMI to 1 UTP Extender, up to 60 metres
NW-HDMI-EX2	HDMI to 2UTP Extender, up to 60 metres

*We always carry the latest version 3D - Internet - HD - 4K x 2K*

## FIBER OPTICS

High quality fiber cable assemblies from New World Telecom have low insertion loss and long life. Connectors are constructed of ceramic material with strain relief to guard against cable damage. The cables tight buffer construction with flexible members allows for easy installation and longer runs. Suitable for both indoor and outdoor use without additional protection. Also suited for longer distances than copper, unlimited bandwidth and total protection from electrical interference.

We stock a complete line of fiber connectivity products, including Transceivers, Fiber patch panels, Fiber patch cords, Fiber connectors and Fiber cable. Please call our customer service for further information.



Fiber Patch Cords

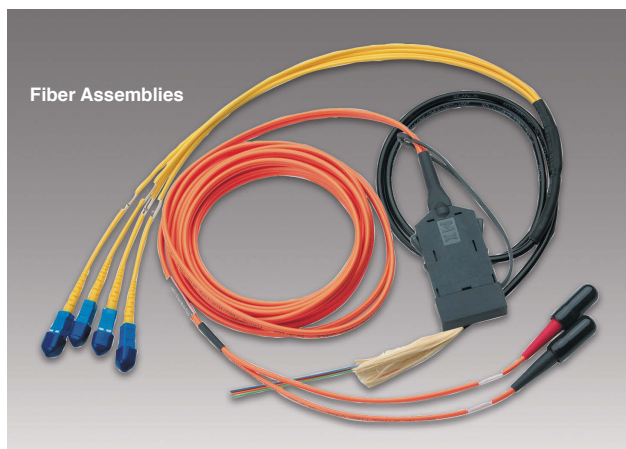


Part Number	Description
	<b>Patch Cords – Duplex Multi-mode 62.5mm / 125 mm, SC-SC</b>
NWF-3-SCSC	3 ft. Fiber Patch Cord, duplex multimode, 62.5mm / 125mm
NWF-7-SCSC	7 ft. Fiber Patch Cord, duplex multimode, 62.5mm / 125mm
NWF-10-SCSC	10 ft. Fiber Patch Cord, duplex multimode, 62.5mm / 125mm
NWF-15-SCSC	15 ft. Fiber Patch Cord, duplex multimode, 62.5mm / 125mm
NWF-25-SCSC	25 ft. Fiber Patch Cord, duplex multimode, 62.5mm / 125mm
NWF-50-SCSC	50 ft. Fiber Patch Cord, duplex multimode, 62.5mm / 125mm



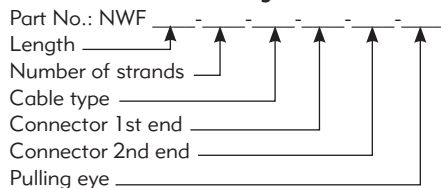
Media Converters

Part Number	Description
	<b>Media Converters</b>
NWF-SC-100	10 / 100 MBPS Media Converter, multimode
NWF-SC-1G	1 GBPS Media Converter, multimode



Fiber Assemblies

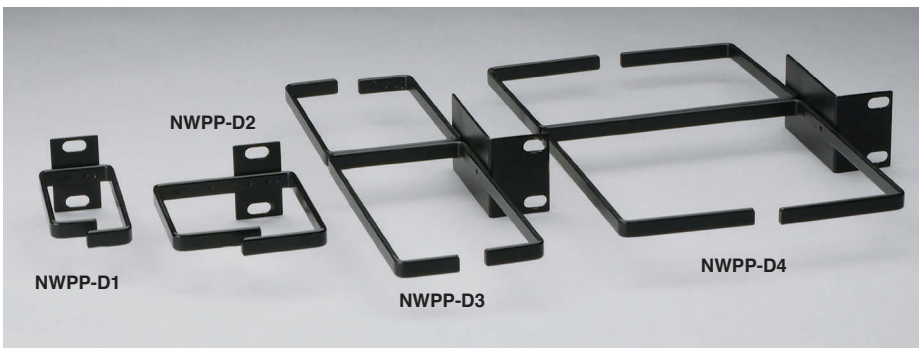
### Cable Assemblies Ordering Formula



No. of strands	Cable type	Conn. 1st end	Conn. 2nd end	Pulling eye
Simplex (Sm)	8.3/125 $\mu$ m singlemode FT4 (A)	No Conn. (00)	No Conn. (00)	YES (E)
Duplex (Du)	50/125 $\mu$ m multimode FT4 (B)	ST (01)	ST (01)	NO
02 strand (02)	62.5/125 $\mu$ m multimode FT4 (C)	SC (02)	SC (02)	
04 strand (04)	8.3/125 $\mu$ m singlemode FT6 (D)	FC (03)	FC (03)	
06 strand (06)	50/125 $\mu$ m multimode FT6 (E)	LC (04)	LC (04)	
10 strand (10)	62.5/125 $\mu$ m multimode FT6 (F)	MTRJ (05)	MTRJ (05)	
12 strand (12)				
24 strand (24)				
48 strand (48)				

## CABLE MANAGERS

Cable Managers from New World Telecom are designed to accommodate large amounts of cable for high speed networking systems, 19" width supports EIA standards. These Managers are completely flexible to support front or back cable management systems. Designer Cable Managers have multiple entry holes for rear cable feed through.



NWPP-2012PI	2 RU Ring Horizontal Manager 3.5" X 19"
NWPP-1U	1 RU Blank Horizontal Manager 1.75" X 19"
NWPP-2U	2 RU Blank Horizontal Manager 3.5" X 19"
NWPP-D1U	1 RU Horizontal Manager with snap-in metal door
NWPP-D2U	2 RU Horizontal Manager with hinged door, 3.5" X 19"
NWPP-2WMD	2 RU Designer Horizontal Manager - 24 slots 3.5" X 19"
NWPP-D1	D-Ring Vertical Manager 3.6"X1.6"
NWPP-D2	D-Ring Vertical Manager 3.6"X3.0"
NWPP-D3	D-Ring Double Sided Vertical Manager Front: 6.0"X3.0", Back: 4.5"X3.0"
NWPP-D4	D-Ring Double Sided Vertical Manager Front: 6.0"X6.0", Back: 4.5"X6.0"
NW-WS	Spool without screw
NW-WSS	Spool with screw

TIP  
 1 RU (Rack Unit) = 1.75"  
 2 RU (Rack Unit) = 3.50"  
 4 RU (Rack Unit) = 7.00"



## WALL BRACKETS & RACK SHELVES

Wall Brackets (Divided hinges and depth adjustable 9" to 15"). New World Telecom offers unique designs for Wall Brackets made according to EIA standards. Available in 1 RU, 2 RU, 4 RU and 8 RU configurations.

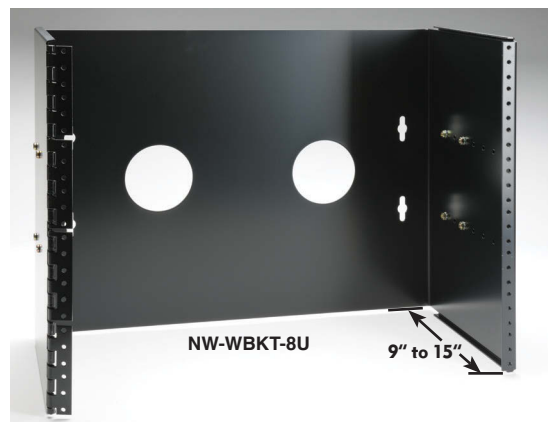
### Features:

- Depth adjustable 9" to 15"
- EIA 10-32 drilled and tapped holes.
- Divided Hinges on wall brackets allow easy access to patch panel while equipment is still intact.
- Multiple entry holes allow cables to enter from the rear.
- Designed with steel construction, light weight and sturdy.
- There are various cable tie points for cable management.
- Brackets can be mounted to either right or left hand swing.



	Shelves, EIA Standard
NW-WBKT-SHF	Wall Bracket Shelf (19.0" x 8.0")
NWRR-FRN	Front Shelf (19.0" x 15.0")
NWRR-CEN	Centered Shelf (19.0" x 22.0")
NWRR-KM	Keyboard Monitor Shelf (19.0" x 23.0")

	Wall Brackets, Depth Adjustable 9" to 15", Divided Hinges, EIA / TIA
NW-WBKT-1U	1 RU (1.75") Hinged Wall Bracket, depth adjustable 9" to 15"
NW-WBKT-2U	2 RU (3.5") Hinged Wall Bracket, depth adjustable 9" to 15"
NW-WBKT-4U	4 RU (7.0") Hinged Wall Bracket, depth adjustable 9" to 15"
NW-WBKT-8U	8 RU (14.0") Hinged Wall Bracket, depth adjustable 9" to 15"

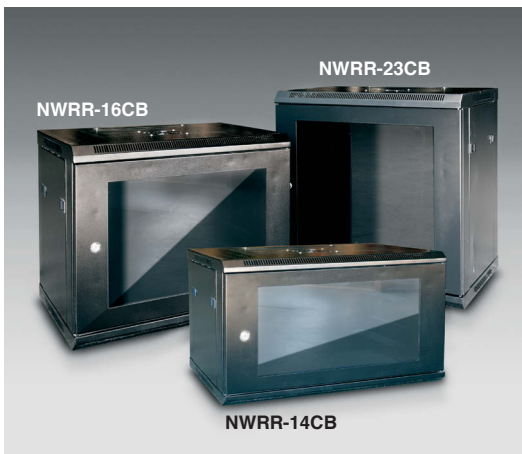
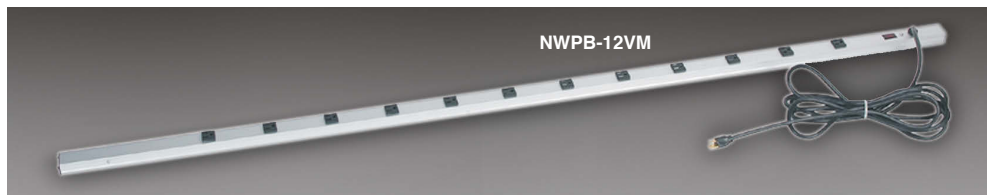




## RELAY RACKS

New World Telecom stocks a wide variety of Relay Racks, Vertical Wire Managers, Vertical Rack Mount Power Bars and durable cable management accessories. EIA standard Relay Racks are sturdy and secure.

These high quality racks are easy to assemble, EIA spaced 10/32 tapped holes are provided on the front mounting flanges to firmly secure your rack mountable devices. Two different sizes are available from stock.



NWRR-47	Relay Rack 19" X 47"
NWRR-77	Relay Rack 19" X 77"
NWRR-VWM-77	Vertical Wire Manager 77" Height, with Hinged Door
NWRR-SOHK	Swing Out Hinge Kit for Rack, 2RU
NWRR-14CB	6 RU, 14" Cabinet with Plexi-Door
NWRR-16CB	9 RU, 16" Cabinet with Plexi-Door
NWRR-23CB	12 RU, 23" Cabinet with Plexi-Door
NWRR-30CB	15 RU, 30" Cabinet with Plexi-Door
NW-PP	Pack Pole 9'.6", with 6' Power Cord
NWPB-12VM	12 Outlet Vertical Power Bar Rack Mount

## CABLE TIES

Velcro Type Cable Ties are designed for Category 6A, 6 and 5e performance to manage all Data-Com cabling and can be re-used hundreds of times. Prevents over tensioning of high performance gigabit cabling. Ideal for applications requiring frequent cabling moves, adds or changes.



Part Number	Description	Colour
NW-V8-BK	8" Velcro type cable ties, 100/Bg.	Black
NW-V12-BK	12" Velcro type cable ties, 100/Bg.	Black
NW-V25M-BK	Velcro Roll 3/4" x 82ft. / 25m	Black



NWT's Nylon Cable Ties are made of one-piece nylon with no metal parts. The straps are tough, resilient, lightweight and abrasion resistant. They offer high tensile strength and are chemically resistant. They install easily by hand or with NWT tooling for pre-selected strap tightness.

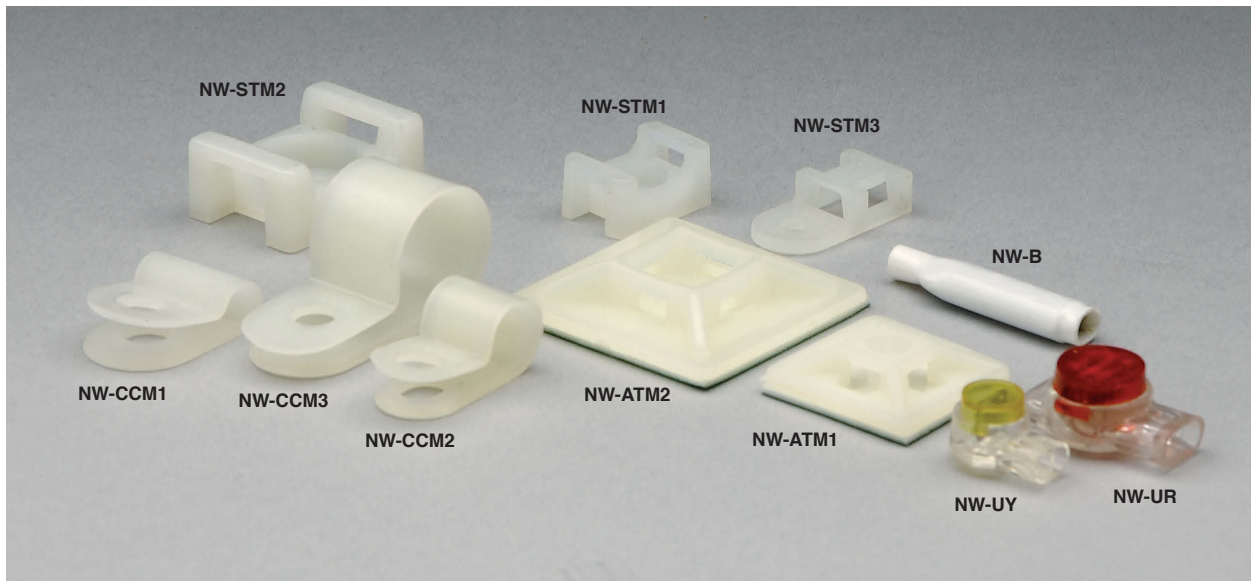
Part No.	Tensile strength	Length (Inches)	Width (Inches)	Screw hole size
TF-3	18 lbs.	3.9"	0.100"	
TF-4	30 lbs.	5.5"	0.145"	
TF-5	50 lbs.	7.9"	0.190"	
TF-5X	50 lbs. (Black outdoor)	7.9"	0.190"	
TF-5H	50 lbs.	7.9"	0.190"	# 10
TF-5HX	50 lbs. (Black outdoor)	7.9"	0.190"	# 10
TF-6	50 lbs.	11.5"	0.190"	
TF-8	50 lbs.	14.0"	0.190"	
TF-4B	18 lbs.	4"	0.100"	
TF-8B	30 lbs.	8"	0.145"	

## WIRING PRODUCTS

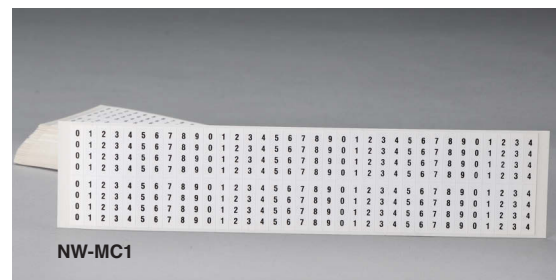
Fast and easy to use, several types of tie mounts are available from stock, from 2-way saddle mount to 4-way adhesive mount.

These clamps are produced using high quality nylon 66, 94V-2.

Cable clamps are available for different size cable diameters



NW-ATM1	4 Way Adhesive Tie Mount, small, 100/bag
NW-ATM2	4 Way Adhesive Tie Mount, large, 100/bag
NW-STM1	2 Way Saddle Tie Mount, small, 100/bag
NW-STM2	2 Way Saddle Tie Mount, large, 100/bag
NW-STM3	Saddle tie mount, 100/bag
NW-CCM1	Cable clamp, 1/8" 1000/bag
NW-CCM2	Cable clamp, 1/4" 1000/bag
NW-CCM3	Cable clamp, 1/2" 1000/bag
NW-B	B-Connectors, 100/bag. Also 1000/box
NW-UR	3 Wire butt connector, 100/bx Red
NW-UY	2 Wire butt connector, 100/bx Yellow
NW-MC1	1-0 Cable Marker Card, 100/bx.
NW-MC2	Blank Cable Marker Card, 100/bx.





## WIRING DUCTS

**Decora Wiring Ducts** are used to hide cable in an office environment and comes with self adhesive tape for easy installation, colour: white, length: 6.5'.

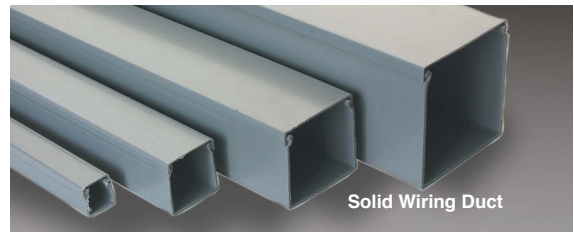
**Slotted and Solid Wiring Ducts** are especially designed to mount on both sides of the Relay Rack or wall to hide, manage and direct cable at random to their locations.

PVC plastic can be cut easily with a cutter into different sizes for other applications.

**Spiral Binders** are used to protect and manage all types of bundled cables.



Decora Wiring Duct



Solid Wiring Duct



Slotted Wiring Duct



Spiral Binders

Part Number	Description	Colour
<b>Decora Wiring Ducts with adhesive tape</b>		
NW-DWD-1/2	1/2" X 1/2" X 6.5' Decora ducts	White
NW-DWD-3/4	3/4" X 1/2" X 6.5' Decora ducts	White
NW-DWD-1	1" X 1/2" X 6.5' Decora ducts	White
NW-DWD-1 1/2	1 1/2" X 1/2" X 6.5' Decora ducts	White
NW-DWD-2	2" X 1/2" X 6.5' Decora ducts	White
<b>Slotted and Solid Wiring Ducts</b>		
NW-PWD-1	1" X 1" X 6.5' solid	Grey
NW-PWD-1S	1" X 1" X 6.5' slotted	Grey
NW-PWD-2	1.75" X 1.75" X 6.5' solid	Grey
NW-PWD-2S	1.75" X 1.75" X 6.5' slotted	Grey
NW-PWD-3	3" X 2.5" X 6.5' solid	Grey
NW-PWD-3S	3" X 2.5" X 6.5' slotted	Grey
NW-PWD-4	4" X 4" X 6.5' solid	Grey
NW-PWD-4S	4" X 4" X 6.5' slotted	Grey
<b>Spiral Binders</b>		
NW-SB24-B	Spiral binder, 32 ft./Bag	Black
NW-SB24-N	Spiral binder, 32 ft./Bag	Natural



## CABLE TESTERS

Testers from New world Telecom are quick and easy to use. These tester units assure cabling will do the job they are rated to do. All telecom and network equipment will then operate at maximum efficiency.

### NW-WTS-501

Linemen's TestSet (by Walker/ Plantronics) meets all the basic needs for Telco standards at a competitive price. Headset port is provided for hands-free operation.



### NW-CTNT (Tone Generator & Tracer Probe Kit)

The Toner and Probe Kit from NWT can easily locate the cables in walls. The Toner can check for shorts and opens using the LED. The Probe has 3 settings to locate cable, Tone, Tone+LED and LED only. Volume control is provided for noisy environments. Carry pouch included.



### NWLCT-1 (LAN Cable Tester)

This LED tester is low cost and portable. It consists of Master and Remote units which perform reliable testing of premise cabling and patch cords. It can test 6C & 8C shielded and non shielded for OPEN, SHORTS, REVERSALS and CROSS pairs. Test status is displayed on LEDs. Carry pouch included.



### NWLCT-2 (Universal Cable Tester)

Universal Cable Tester from New World Telecom is designed to easily read the correct cable pin out configuration. It consists of Master and Remote units which perform a reliable testing of premise cabling and patch cords. Carry pouch included.

It can test:

RJ11: 6P2C, 6P4C

RJ12 : 6P6C

RJ45 : 8P8C

T568A/ T568B : 8P8C

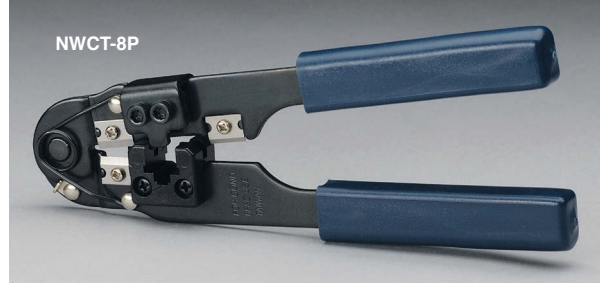
USB : A/A, A/B

Coax: F-Type, BNC, RCA



## Tools

Tools from New World Telecom are versatile and easy to use. High quality steel ensures longer life and accurate alignment of the die gives a precision crimp every time.



NWCT-4P	4 position 4P4C for Telephone Handset Cords
NWCT-6P	6 position 6P6C, 6P4C, 6P2C for Telephone Line Cords
NWCT-8P	8 position for 8P8C Data Patch Cords
NWCT-AIORT	All In One Ratchet Tool 8P for Data Patch Cords, 6P for Telephone Line Cords, 4P for Telephone handset cord, DEC for offset 6P Mod plugs
NWCT-UNI-RCT	Universal Ratchet Tool 6P for Line Cords and 8P for Data Patch Cords
NWCT-C	Precise Cutter
NWCT-CC	Cable Cutter for RG58, RG59, RG6, RG7, RG11, UTP & STP cables
NWCT-CS1	Precise Stripper and Cutter 10 – 22 AWG
NWCT-CS2	Precise Stripper and Cutter 20 – 30 AWG
NWCT-RCC	Ratchet Cable Cutter, 1 3/8" (35mm) dia, up to 200 pair UTP cable.

Tools



NWCT-110	110 type Punch tool
NWCT-66	66 type Punch tool
NWCT-110 Y	110 type Punch tool, twist on
NWT-16A	BIX type punch tool
NWCT-USCT	Universal stripping tool for Cat.6, Cat.5E, Cat.3 and quad cable
NWCT-STR	UTP stripping tool with 110 punch tool
NWCT-COAX	Coax cable stripper for RG6, RG59, RG58 adjustable
NWCT-UCS	All In One cable stripper for UTP, STP, RG58, RG59, RG6, RG7, RG11, Flat cable, with cutter
NWCT-SRG	Mini COAX stripping tool for RG6 & RG59
NWCT-PSCT	Push & Seal compression crimp tool for F-type, BNC, RCA and all angled types.
NWCT-AIOCT	All In One Push & Seal compression crimp tool for F-type, BNC, RCA and all angled types. It can also crimp all other manufacturers connectors.





Tools



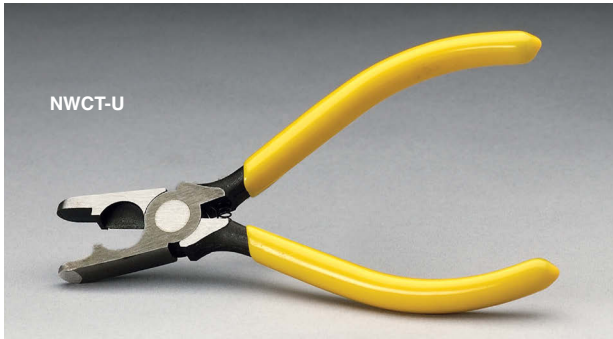
NWCT-ACS



NWCT-NT



NWCT-RGIE



NWCT-U

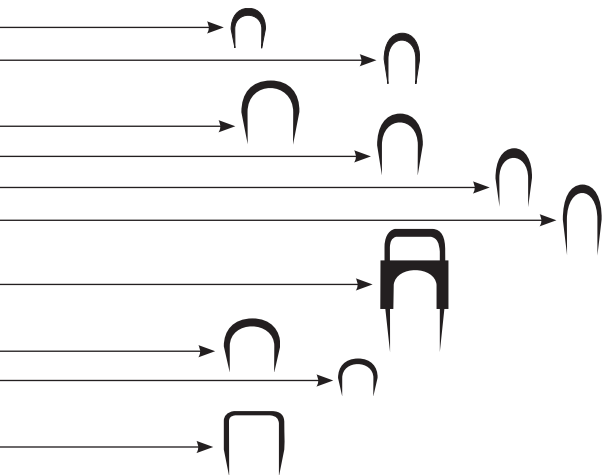


NWCT-ACS	Adjustable cable slitter, 4.2 mm - 25 mm (0.18" - 1") diameter
NWCT-NT	Nibbling tool, cuts up to 18 AWG soft metal
NWCT-RGIE	Space enlarger for RG59 and RG6 cable jacket. It also insert F-type connector
NWCT-U	Crimp tool for U-type connectors

**Staple Gun and Staples**

"ARROW, The Standard of excellence by which all others are judged."

Part Number	Description
T-18	Staple gun ( 3/16" dia)
T-18-3/8"	Staples 3/8", 5000/bx.
T-18-7/16"	Staples 7/16", 5000/bx.
T-25	Staple gun (1/4" dia)
T-25-9/32"	Staples 9/32", 5000/bx.
T-25-3/8"	Staples 3/8", 5000/bx.
T-25-7/16"	Staples 7/16", 5000/bx.
T-25-9/16"	Staples 9/16", 5000/bx.
T-59	Staple gun (1/4" to 5/16" dia)
T-591168	Insulated Staples 1/4"X1/4" clear
T-37	Staple gun (5/16" dia)
T-37-1/2"	Staples 1/2", 5000/bx.
T-37-9/16"	Staples 9/16", 5000/bx.
T-75	Staple gun (1/2" dia)
T-75-5/8"	Staples 5/8", 1000/pk.





## NETWORK SWITCHES 10/100 MBPS

### 10 /100 MBPS SWITCHES

- All NWT Switches support Auto MDI/X
- High communication efficiency achieved via Flow Control
- Fan-less, noiseless design/lightweight plastic body for 5 & 8 port switches
- 19-inch rack-mount kit included for 16 and 24 port metal body switches



NW-FX05EA



NW-FX08EA

NW-FX05EA	5 Port 10/100 MBPS Switch
NW-FX08EA	8 Port 10/100 MBPS Switch
NW-FX16A	16 Port 10/100 MBPS Switch 19" Rack Mount
NW-FX24A	24 Port 10/100 MBPS Switch 19" Rack Mount



NW-FX16A



NW-FX24A

## NETWORK SWITCHES GIGABIT

### Gigabit 10 /100 /1000 MBPS Switches

New World Telecom provides an end to end solution for all your networking requirements, including our new high performance Gigabit network cards and switches. The switch will improve your backbone bandwidth up to 10 times without re-wiring your cabling system. It is adaptable to existing Category 5e cabling and with full duplex function the switch can transmit and receive at 1000 MBPS. This new copper based Gigabit switch is powered by a non-blocking 6.4 Gbps backplane. Backward compatible with 100 Mbps and 10 Mbps.



NW-FXG-05



NW-FXG-08



NW-FXG-16



NW-FXG-24



NW-CS1016G-16P



NW-CS1024G-24P

NW-FXG-05	5 Port 10/100/1000 MBPS Gigabit Switch
NW-FXG-08	8 Port 10/100/1000 MBPS Gigabit Switch
NW-FXG-16	16 Port 10/100/1000 MBPS Gigabit Switch, QOS, 19" Rack Mount
NW-FXG-24	24 Port 10/100/1000 MBPS Gigabit Switch, QOS, 19" Rack Mount
NW-CS1008G-8P	8 Port Gigabit POE Switch, 80 W
NW-CS1016G-16P	16 Port Gigabit POE Switch, 250 W
NW-CS1024G-24P	24 Port Gigabit POE Switch, 380 W
NW-AM3008-8P	8 Port Access Point Controller



NW-AM3008-8P



NW-1008G-8P

## WIFI & MORE

Simple compact WiFi products from New World Telecom uses the latest IEEE-802.11n technology - backward compatible to 802.11b & g. Several configurations are available featuring WPS security, internal antenna, manual security switch, ROHS compliant and Energy saving Green AP.



NW-MZK-MF300N	3 in 1- Router, Access Point, Converter, 300Mbps
NW-MZK-EX300N2	WiFi Extender 300 Mbps, IEEE802.11n
NW-GW-SC150N	Ethernet Wireless Converter – IEEE802.11n, 150 Mbps
NW-MZK-SA150N	Simple Access Point, IEEE802.11N, 150Mbps
NW-MZK-WG300NX	Wireless LAN Router, IEEE802.11n, 300 MBPS, USB, 3G
NW-EQN-AP300E	Ceiling Mount Access Point 300 Mbps, POE, IEEE802.11n
NW-PL-UMW01	USB Magic Switch. Enables direct connectivity between 2 computers enabling seamless data sharing and file transfer.
NW-IW100GX-N	Flush Mount POE Access Point, 11n, 150 Mbps, 800 mW
NW-WM100G-N	Surface Mount POE Access Point, 11n, 150 Mbps, 800 mW

# TELECOM ACCESSORIES

Equipment



Part Number	Description
NW-TS	<b>Telephone Stand</b> Telephone Stand, works with any wall mount phone
NWPH-10P	<b>Horns</b> 10 Watt Horn with built-in amplifier, includes Power Supply
NWPH-10PR	10 Watt Horn with built-in amplifier & Ringer, includes Power Supply
NWTH-15T	70V Horn
NW-RFIBX	<b>RF Filter</b> RFI Filter, filters unwanted radio frequencies on telephone line.
NW-HTT-XX	<b>Meridian Handsets for M-Series and T-Series</b> T-Series Handset XX=Colour : 11=Platinum : 15=Charcoal Grey
NW-HTM-XX	M-Series Handset XX=Colour : 02=Black : 05=Pastel Grey : 07=Chameleon Grey Ash
NWPB-1	<b>Power Bars</b> 6 Outlet Power Bar with 4 ft. cord, on/off & reset switch, surge protector
NW-SL64	Phone Strobe light. 64 LED - Adjustable flash CO Line, Dry Contact. Power supply included





# WIRING CHART

25 Pair Cable Colour Code	Telco Pin #	USOC RJ11 6P4C	USOC RJ12 6P6C	USOC RJ45 8P8C	T568B 8P8C	T568A 8P8C	10/100 BaseT 8P4C	256A 8P6C	DEC MMJ 6P4C	DEC MMJ 6P6C
White/ Blue	26	4	4	5	5	5	1	5	2	2
Blue/ White	1	3	3	4	4	4	2	4	3	3
White/ Orange	27	2	2	3	1	3	3	1	5	5
Orange/ White	2	5	5	6	2	6	6	2	4	4
White/ Green	28	4	1	2	3	1	1	3	2	1
Green/ White	3	3	6	7	6	2	2	6	3	6
White/ Brown	29	2	4	1	7	7	3	5	5	2
Brown/ White	4	5	3	8	8	8	6	4	4	3
White/ Slate	30	4	2	5	5	5	1	1	2	5
Slate/ White	5	3	5	4	4	4	2	2	3	4
Red/ Blue	31	2	1	3	1	3	3	3	5	1
Blue/ Red	6	5	6	6	2	6	6	6	4	6
Red / Orange	32	4	4	2	3	1	1	5	2	2
Orange/ Red	7	3	3	7	6	2	2	4	3	3
Red / Green	33	2	2	1	7	7	3	1	5	5
Green/ Red	8	5	5	8	8	8	6	2	4	4
Red / Brown	34	4	1	5	5	5	1	3	2	1
Brown/ Red	9	3	6	4	4	4	2	6	3	6
Red / Slate	35	2	4	3	1	3	3	5	5	2
Slate/ Red	10	5	3	6	2	6	6	4	4	3
Black/ Blue	36	4	2	2	3	1	1	1	2	5
Blue/ Black	11	3	5	7	6	2	2	2	3	4
Black / Orange	37	2	1	1	7	7	3	3	5	1
Orange/ Black	12	5	6	8	8	8	6	6	4	6
Black / Green	38	4	4	5	5	5	1	5	2	2
Green/ Black	13	3	3	4	4	4	2	4	3	3
Black / Brown	39	2	2	3	1	3	3	1	5	5
Brown/ Black	14	5	5	6	2	6	6	2	4	4
Black / Slate	40	4	1	2	3	1	1	3	2	1
Slate/ Black	15	3	6	7	6	2	2	6	3	6
Yellow/ Blue	41	2	4	1	7	7	3	5	5	2
Blue/ Yellow	16	5	3	8	8	8	6	4	4	3
Yellow / Orange	42	4	2	5	5	5	1	1	2	5
Orange/ Yellow	17	3	5	4	4	4	2	2	3	4
Yellow / Green	43	2	1	3	1	3	3	3	5	1
Green/ Yellow	18	5	6	6	2	6	6	6	4	6
Yellow / Brown	44	4	4	2	3	1	1	5	2	2
Brown/ Yellow	19	3	3	7	6	2	2	4	3	3
Yellow / Slate	45	2	2	1	7	7	3	1	5	5
Slate/ Yellow	20	5	5	8	8	8	6	2	4	4
Violet/ Blue	46	4	1	5	5	5	1	3	2	1
Blue/ Violet	21	3	6	4	4	4	2	6	3	6
Violet / Orange	47	2	4	3	1	3	3	5	5	2
Orange/ Violet	22	5	3	6	2	6	6	4	4	3
Violet / Green	48	4	2	2	3	1	1	1	2	5
Green/ Violet	23	3	5	7	6	2	2	2	3	4
Violet / Brown	49	2	1	1	7	7	3	3	5	1
Brown/ Violet	24	5	6	8	8	8	6	6	4	6
Violet / Slate	50	-	-	-	-	-	-	-	-	-
Slate/ Violet	25	-	-	-	-	-	-	-	-	-
# Of modular jacks per telco connector		12	8	6	6	6	12	8	12	8

C.O.D. or Net 30 days on approved credit. Taxes Extra.

All prices are subject to change without notice.

If the orders are below minimums, add \$25.00 processing charge.

Dealers: \$ 100.00 Distributors: \$ 1000.00

Return authorization number is required on all returns. New World Telecom will not accept returns of any material after 30 days from date of shipment.

Credits will not be issued unless the material is returned in it's original packaging.

Manufacturers warranty will apply on material distributed by us. In the event of defective material we will replace the material at our expense, but no claim may be allowed for expenses included in installation or use. It is your responsibility to order material which is adequate for the purpose to which it is intended.

New World Telecom assumes no responsibility for, and shall not be liable for loss of use, revenue, profit, or any other indirect, incidental or consequential damages.

Same day shipping of in stock items, provided orders are placed before 12:00 noon.

All New World Telecom Inc. products bear the logo NWT and is the trademark and trade name of New World Telecom Inc. All other trade names and trademarks are the property of their respective owners.

All rights reserved. No part of this catalogue may be used or reproduced in any form or by any means, or stored in a database or retrieval system, without written permission from New World Telecom Inc.

New World Telecom Inc. is not responsible for any errors that may appear in this catalogue.

New World Telecom Inc. reserves the right to modify or change product design and specifications without notice.

NWT

!ntelligent connectivity



intelligent connectivity

**NEW WORLD**  
T E L E C O M

New World Telecom Inc.,  
350 Britannia Road East, Unit 1,  
Mississauga, Ontario, L4Z 1X9

**t:** 905 • 507 • 4810

**f:** 905 • 507 • 4811

intelligent connectivity  
[www.newworldtelecom.com](http://www.newworldtelecom.com)